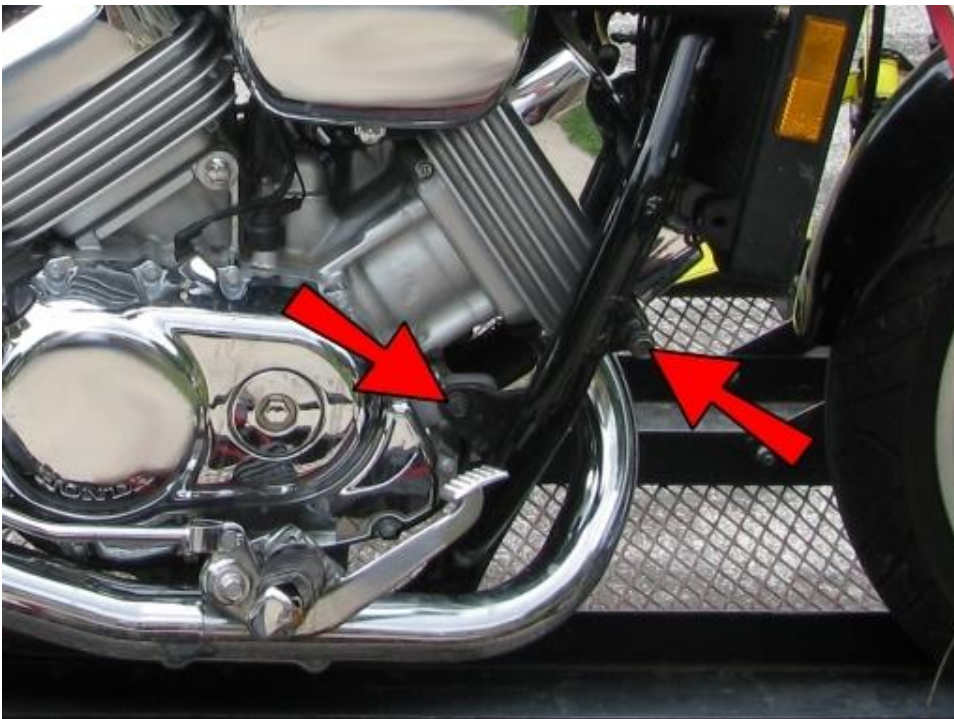
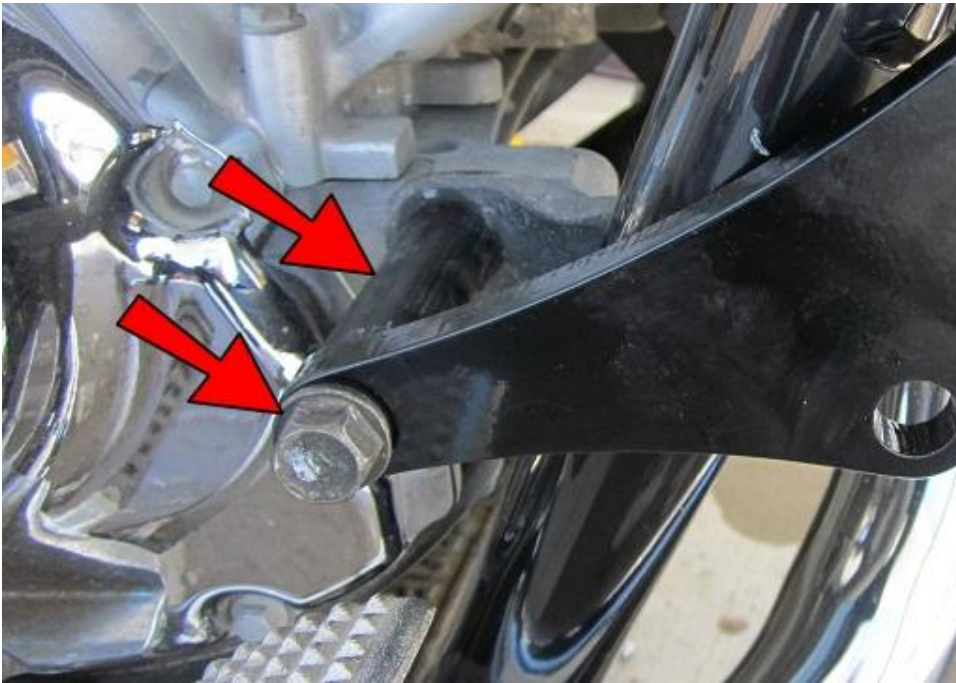


Installation Instructions for HPM2 Highway Peg Mounts (94-03 Honda Magna)

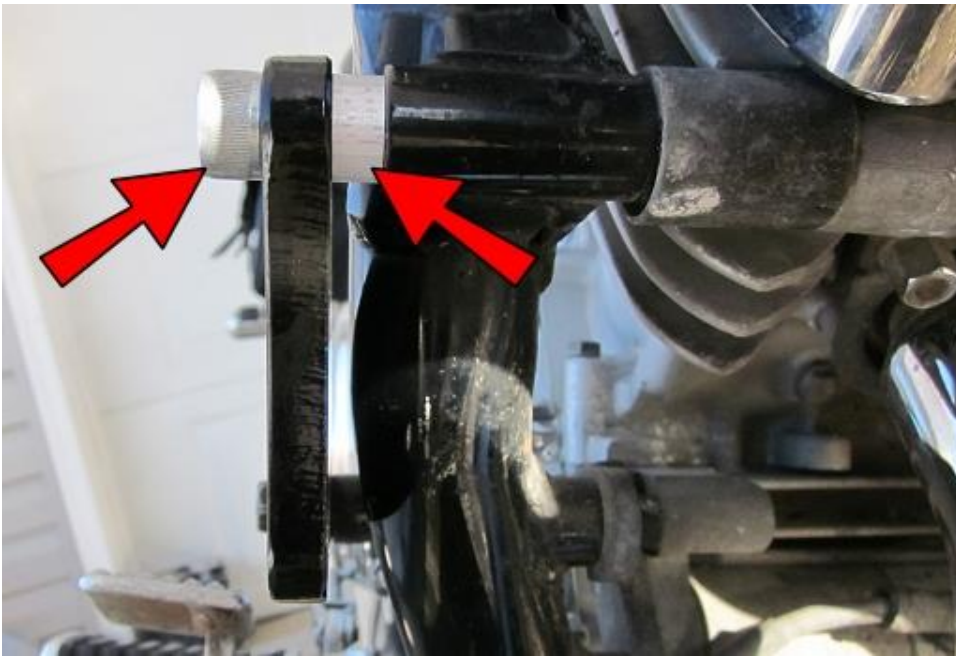
It is highly recommended that you use a thread lock compound such as Loctite on all threads to keep them from vibrating loose. Please read these instructions entirely before starting. Below is a picture of the components that you should have in your kit. If you are missing anything please email sales@refinedcycle.com. It is helpful to loosely tension a jack under the motor to help keep the holes lined up while you remove the 2 motor mount bolts that will hold the HPM2 in place.



Remove these two motor mount bolts. The bolt that you remove from the front will now be used as the rear. The bolt and nut (supplied) will now be used on the front.



Loosely thread in the rear bolt using the long spacer (supplied).



Insert the long bolt (supplied) into the front and use the short spacer (supplied) between the HPM2 and the frame and keep the stock spacer between the frame and the motor in the same place as it was.



Secure with the nut (supplied) and tighten this bolt and the front bolt.



Attach a foot peg to the HPM2, tighten and repeat on the other side.

That's it!

It is recommended that at this point you double check that ALL connections are tight and take the bike for a test ride.

Enjoy the ride!