

## Installation instructions for MR12 Rear Window Molle Panel for 5th Gen. 4 Runner

It is highly recommended that you use a thread lock compound such as Loctite brand on all threads to keep them from vibrating loose. Please read these instructions entirely before starting.

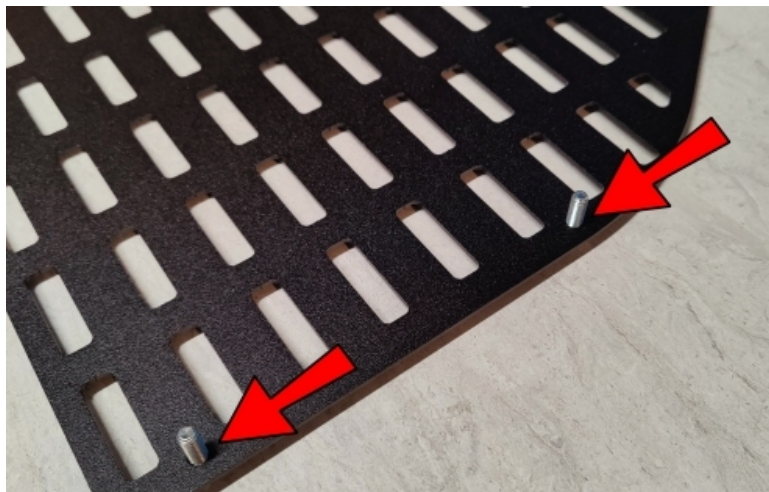
This list shows the components of the MR12 kit. Parts will be referred to by the names & numbers shown here. If you are missing anything please email [RefinedCycle@gmail.com](mailto:RefinedCycle@gmail.com).

### MR12 Components....

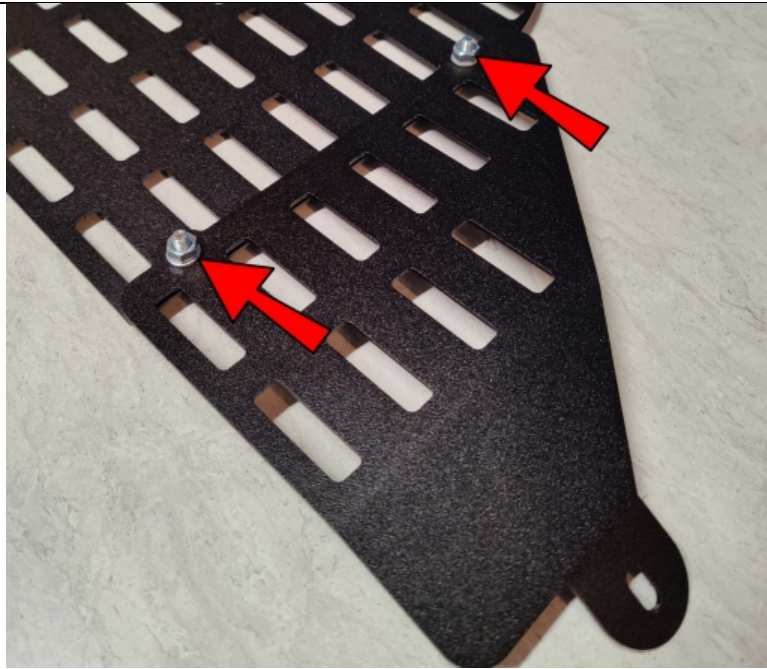
- 1) MR12 Panel
- 2) Side Hanger
- 3) Top Hanger
- 4) M6-1.0x18 Bolt (qty. 4)
- 5) M6 Nut (qty. 4)
- 6) M6 Washer (qty. 10)
- 7) M6-1.0x40 Bolt
- 8) M6-1.0x110 Bolt
- 9) 1" Spacer
- 10) 3.6" Spacer



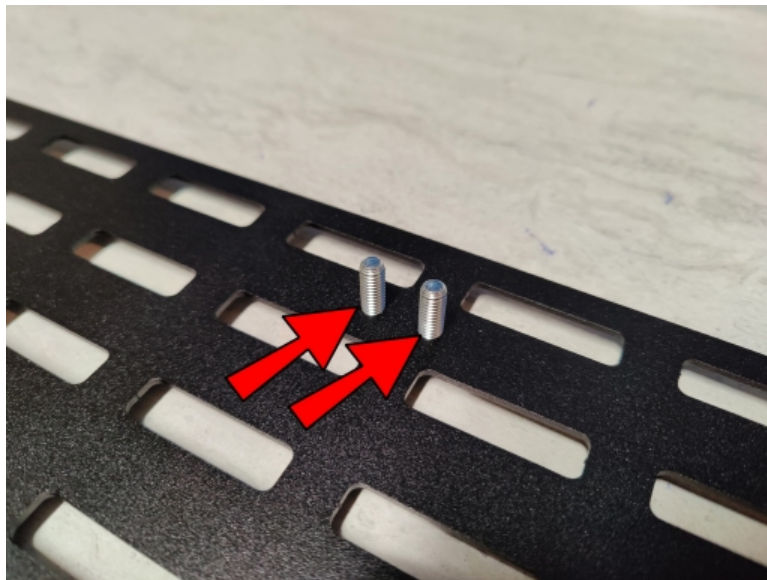
Place a washer on all of the bolts.



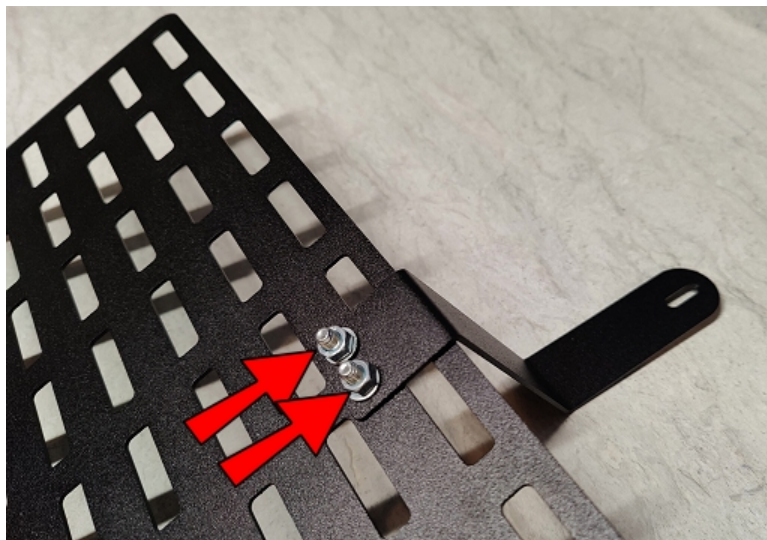
Lay the panel on it's back side and insert 2 of the M6-1.0x18 Bolts into the holes on the side of the panel, facing up.



Place the Side Hanger on top of the bolts and put a Washer and a Nut onto each Bolt. Do not tighten yet.



Insert 2 of the M6-1.0x18 Bolts into the holes on the top of the panel, facing up.



Place the Top Hanger on top of the bolts and put a Washer and a Nut onto each Bolt. Do not tighten yet.



Remove the cover from the hanger hook and remove the bolt.



Twist the cargo net hook off and remove the bolt inside.

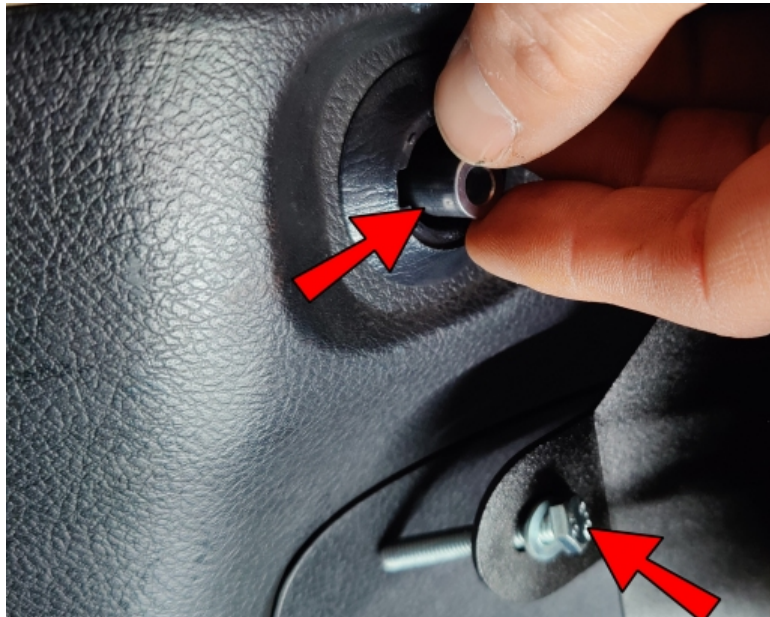


Pry this cover off and remove the bolt inside.

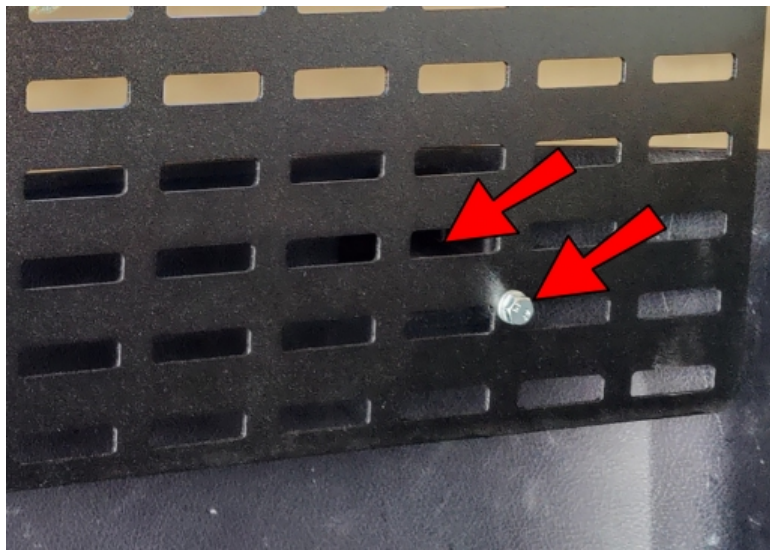


Using the bolt you removed earlier from the hanger hook, attach the top of the panel assembly. Do not tighten yet.

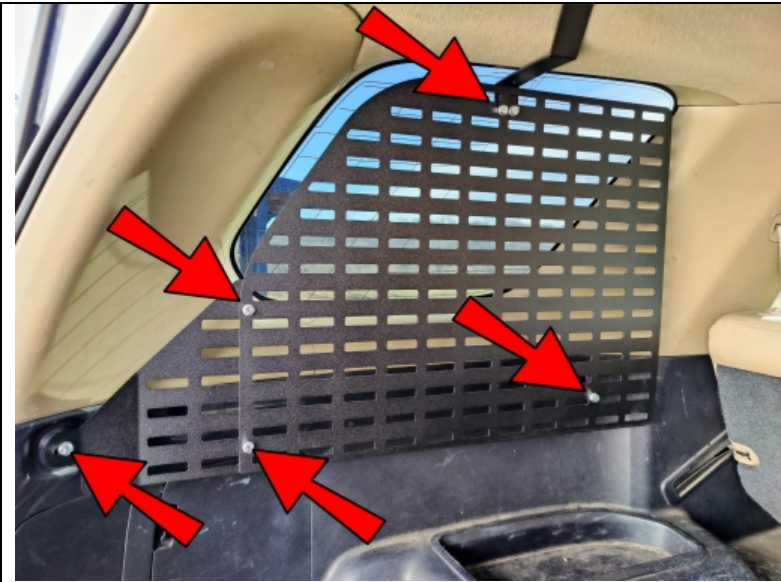
(Shown here with our MR6 Overhead Panel installed as well.)



Insert the M6-1.0x40 Bolt into the Side Hanger hole and insert the 1" Spacer into the empty cargo net hook hole. Line up the panel and Spacer and start the bolt into the threads in the cargo net hook hole.



Insert the 3.6" Spacer into the hole behind the molle panel and insert the M6-1.0x110 Bolt into the molle panel and Spacer and thread it in.



Line up the Molle Panel as desired and tighten all bolts.



Now is the time to arrange and attach your Molle bags, get organized, and enjoy!