

Installation Instructions for MR13 Rear Window Molle Panel for 80 Series Land Cruiser

It is highly recommended that you use a thread lock compound such as Loctite brand on all threads to keep them from vibrating loose. Please read these instructions entirely before starting.

This list shows the components of the MR13 kit. Parts will be referred to by the names & numbers shown here. If you are missing anything please email RefinedCycle@gmail.com.

MR13 Components....

- 1) Panels (Left & Right)
- 2) Side Hanger
- 3) M6-1.0x18 Bolt (qty. 6)
- 4) M6-1.0x25 Socket Head Bolt (qty. 2)
- 5) M6 Nut (qty. 6)
- 6) M6 Washer (qty. 12)



Before you begin, open the rear windows. This will allow access to tighten nuts as well as attach molle bags.

Start by prying off the small screw covers and remove the 2 screws to remove the rear grab handle.



Pry open this cover and remove this bolt for the 2nd and 3rd row seatbelts.

Note, if you no longer have the rear seat belts or this bolt, you will need a 7/16-20 Standard bolt. Toyota did NOT use a metric bolt for this.



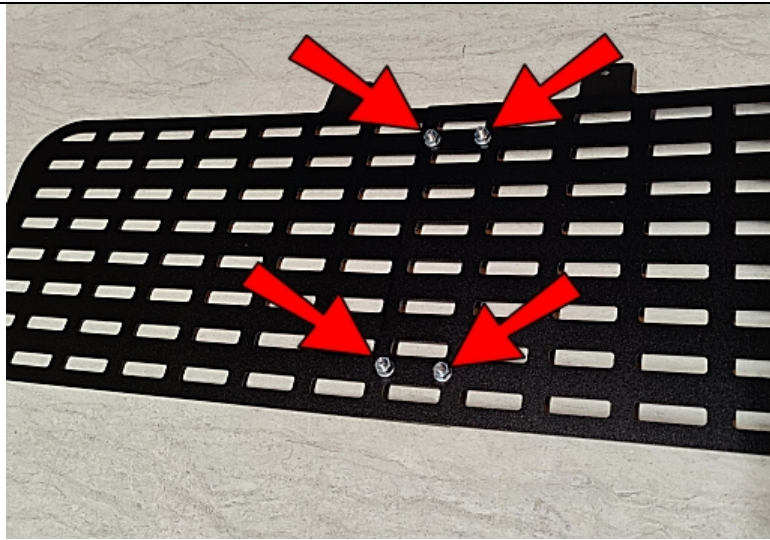
Place M6 Washers on the six M6-1.0x18 bolts.



IF you are installing the MR13 on the PASSENGER side, as we are in this installation, you will need to bend the top tabs slightly, as shown in the NEXT step. If you are installing on the DRIVER side, SKIP this next step....



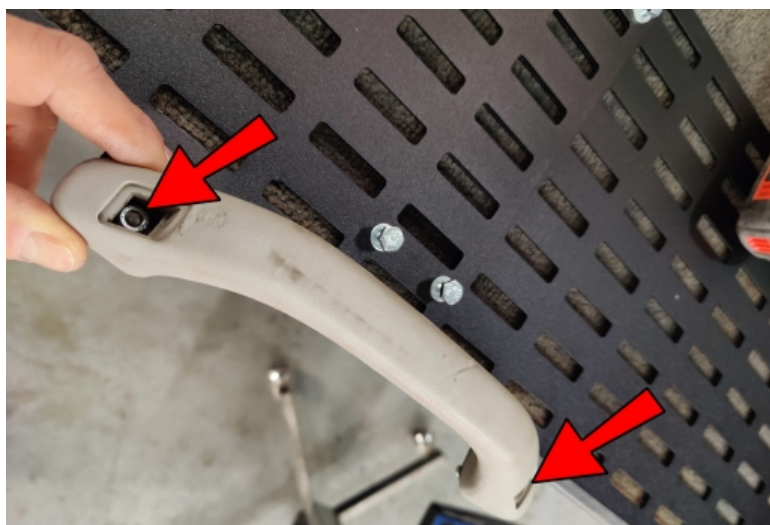
(Passenger side installation ONLY), Lay both panels on the edge of a flat surface so that the top hanger tab is up. This tab is bent to 10 degrees. Use a leather glove or some cardboard to protect the finish and grip with pliers, and bend the tabs down to about 10 degrees the other way. This is for reference only and does not need to be extremely accurate, just try to get both tabs about the same.



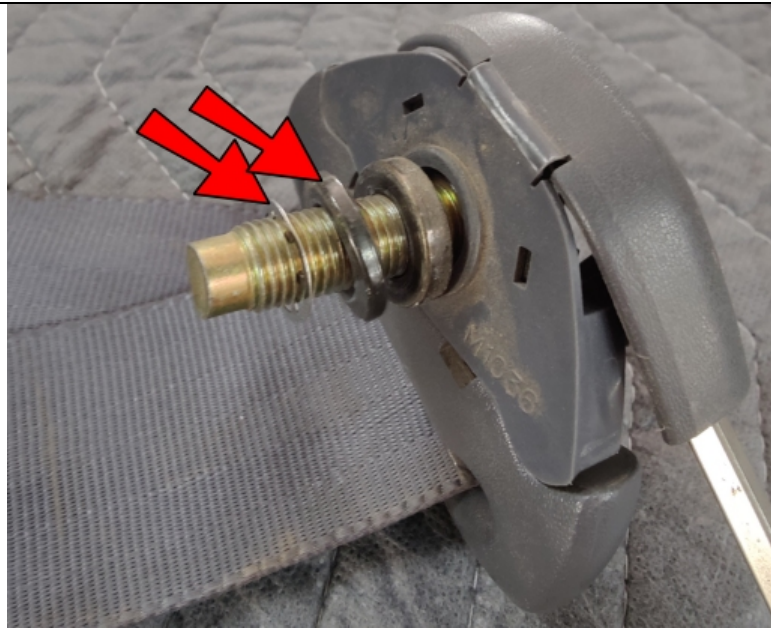
Lay the Panels so that the tab bends are DOWN. Lay one panel over the other, line up the holes and insert four of the M6 bolts with washers into the holes, from UNDERNEATH, and place washers and nuts on TOP. ONLY finger tighten at this time.



With the Panels still tab bends DOWN. Lay the Side Hanger OVER the panel, with it's bend DOWN as well, line up the holes and insert two of the M6 bolts with washers into the holes, from UNDERNEATH, and place washers and nuts on TOP. DO NOT tighten at this time.



Place the grab handle onto the top hanger tabs and line up the holes. Insert the two M6-1.0x25 Socket Head Bolts. This makes it easier to find the holes in the ceiling. Reattach the grab handle with the panel behind it. Do NOT tighten yet.



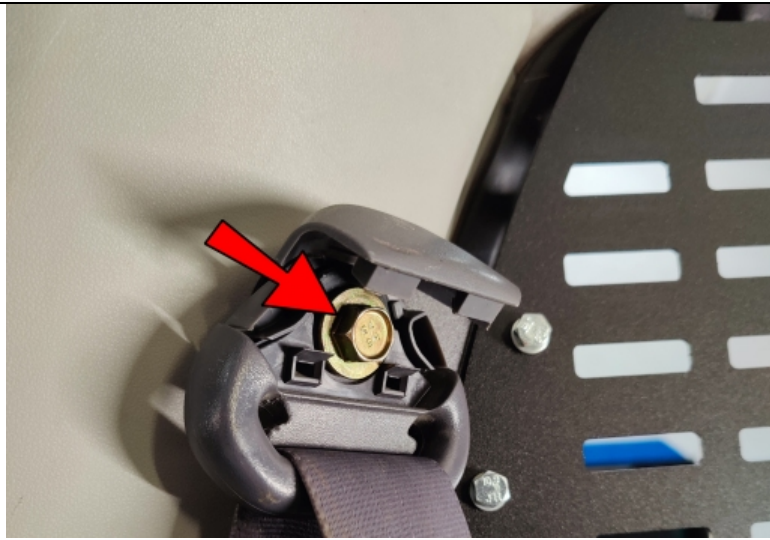
Do this for both seatbelts. There should be a very thin retaining washer, and thicker washer, and a spacer. Remove the 2 washers and leave the slightly thicker spacer.



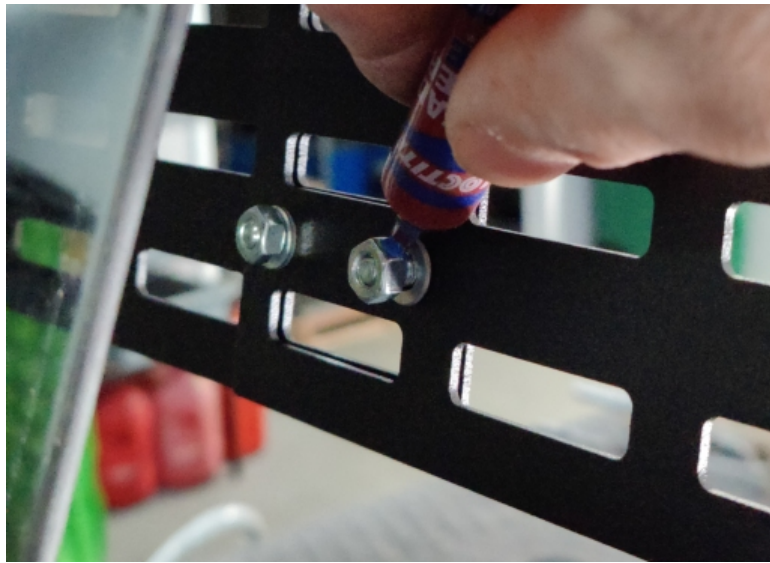
Insert the seat belt assembly into the large hole on the Side Hanger then replace the washer and thin retaining washer



Insert the middle seat belt assembly into the large hole on the tab of the front panel, then replace the washer and thin retaining washer.



Thread both the seatbelt assemblies back into their holes and do not tighten yet. Line up the panels so that they are level and follow the roofline, then go back to the TOP hanger tabs with grab bar and tighten THOSE bolts. NOW tighten the seatbelt mount bolts and snap the covers closed, (just the large bolts, NOT the M6 bolts).



From the outside, loosen the nuts a bit and apply some thread lock right where the nut will be, then tighten the nuts.



Do the same as above for these nuts; thread lock and tighten.

Attach your Molle bags, get organized, and enjoy!

Don't forget about our many other Molle Panels and mounts to complete your storage and organization solution system!