

Installation Instructions for MR15 Rear Window Molle Panel for 80 Series Land Cruiser

It is highly recommended that you use a thread lock compound such as Loctite brand on all threads to keep them from vibrating loose. Please read these instructions entirely before starting.

This list shows the components of the MR15 kit. Parts will be referred to by the names & numbers shown here. If you are missing anything please email RefinedCycle@gmail.com.

MR15 Components....

- 1) Panel
- 2) Side Hanger
- 3) Bottom Hanger
- 4) M6-1.0x18 Bolt (qty. 4)
- 5) M6-1.0x25 Socket Head Bolt
- 6) M6 Nut (qty. 4)
- 7) M6 Washer (qty. 8)



Before you begin, open the rear section of the rear window. You can still open it with the panel installed but it's easier to do beforehand. This will allow access to tighten some nuts as well as attach molle bags.

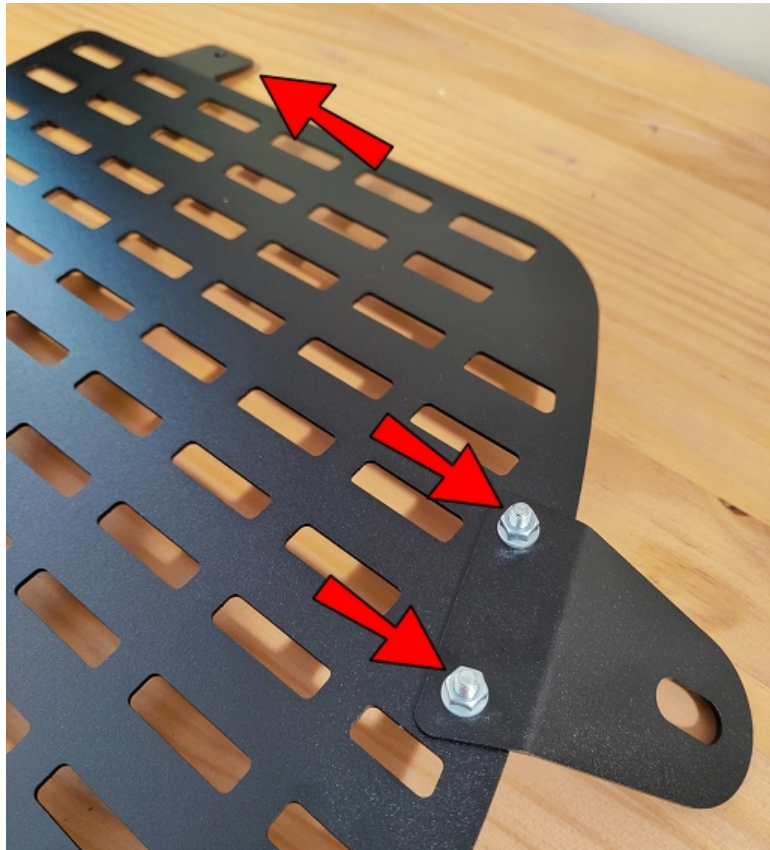
Start by prying off the small screw covers and remove the 2 screws to remove the rear grab handle.



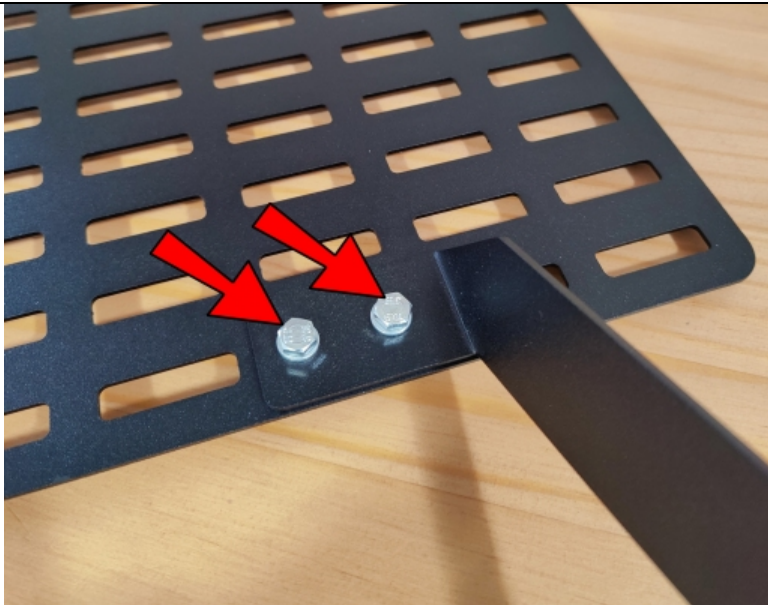
Pry open this cover and remove this bolt. Note, if you no longer have the rear seat belts or this bolt, you will need a 7/16-20 Standard bolt. Toyota did NOT use a metric bolt for this.



Place M6 Washers on the four M6-1.0x18 bolts.



Lay the Panel so that the top tab bend is DOWN. Lay the Side Hanger OVER the panel, with it's bend DOWN as well, line up the holes and insert two of the M6 bolts with washers into the holes, from UNDERNEATH, and place washers and nuts on TOP. DO NOT tighten at this time.

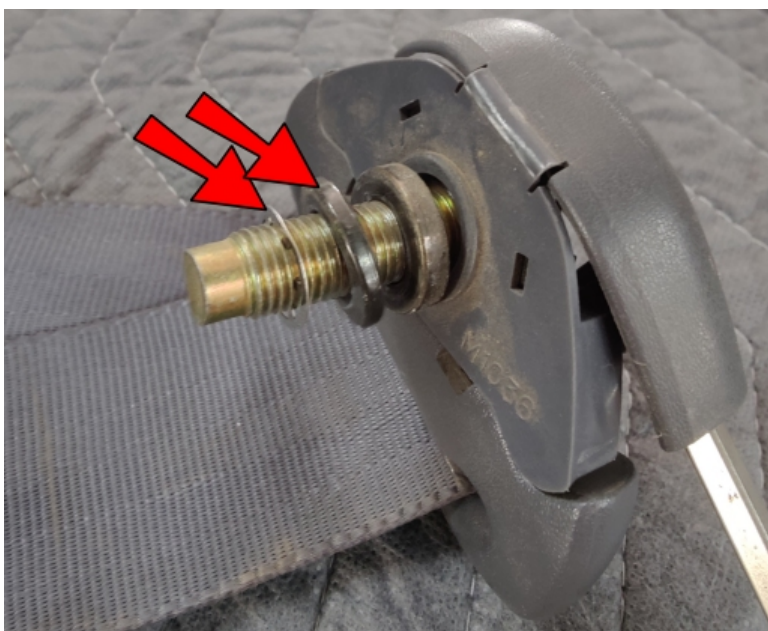


FLIP the panel over to the other side and attach the Bottom Hanger to the bottom of the panel, using M6 Bolts, Washers and Nuts as used previously on the Side Hanger. DO NOT tighten yet.

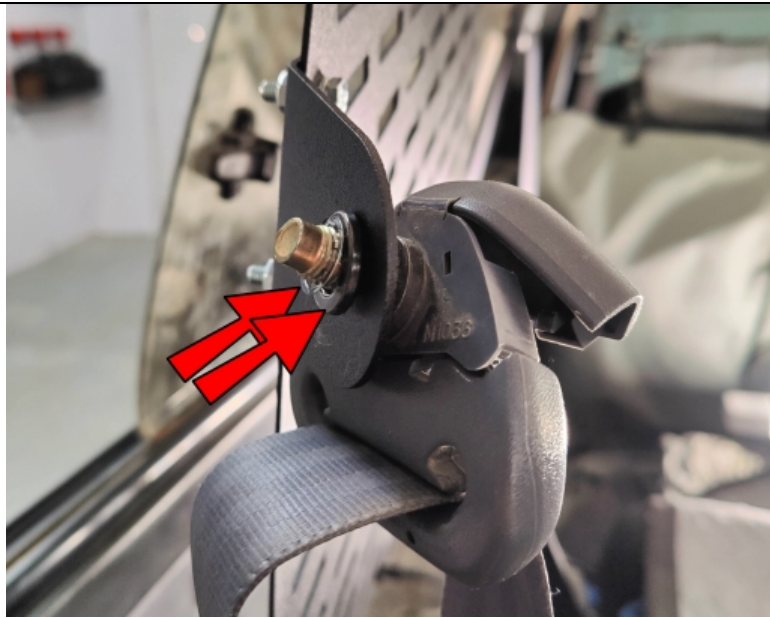


Using the included M6-1.0x25 Socket Head Bolt, reattach the grab handle with the panel behind it. Do NOT tighten yet.

Note, you will use the original bolt for the FRONT side of the grab handle.



There should be a very thin retaining washer, and thicker washer, and a spacer. Remove the 2 washers and leave the slightly thicker spacer.



Insert the seat belt assembly into the large hole on the Side Hanger then replace the washer and thin retaining washer.

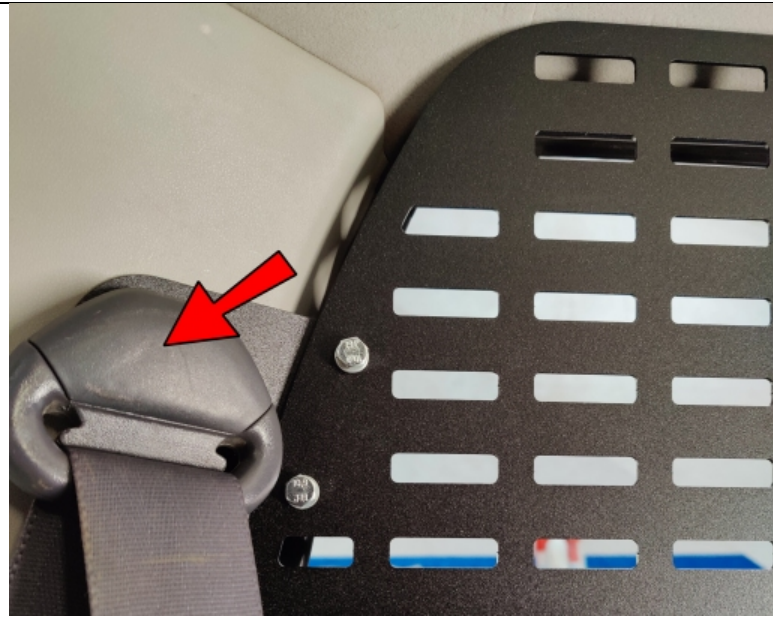


Thread the seatbelt assembly back into its hole and do not tighten it yet.



Using the original jump seat bolts, attach the Bottom Hanger as shown and tighten now.

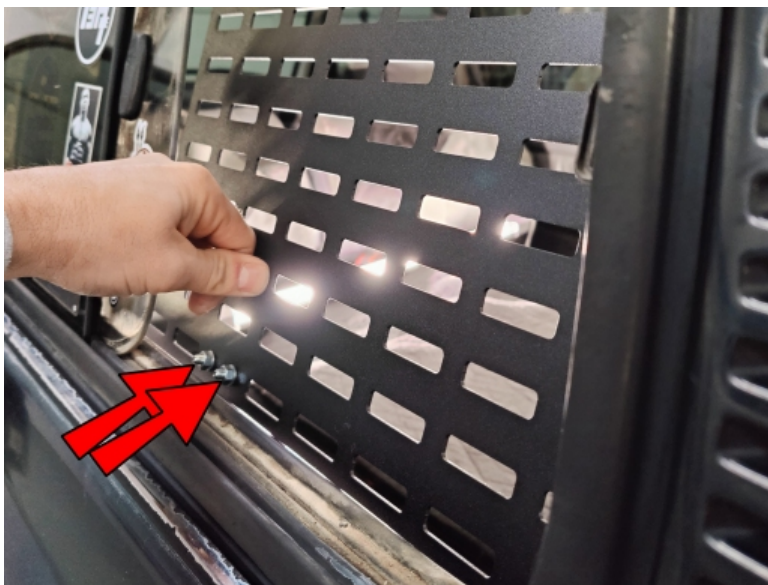
Note, if you still have the jump seats installed, you will not be able to use this Bottom Hanger. The Molle Panel will still work just fine, it just won't be quite as rigid mounted.



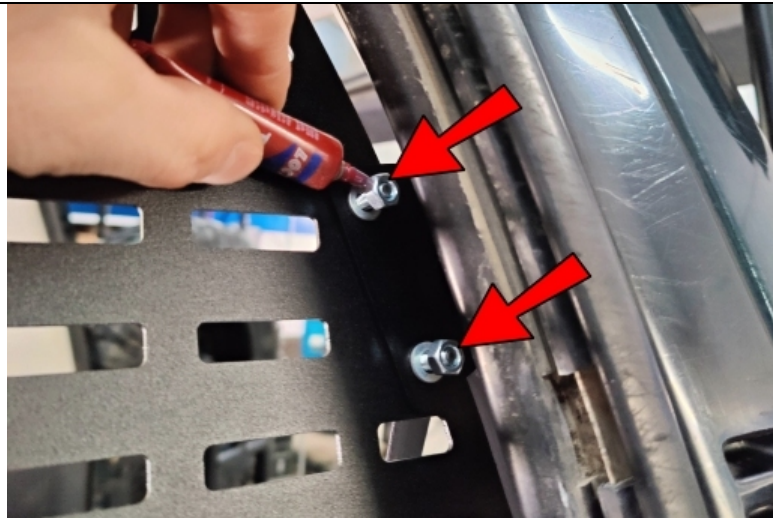
Line up the panel so that it is level and follows the roofline and window curvature, then tighten the seatbelt bolt and snap the cover closed. Also tighten the grab handle bolt(s).



From the outside, loosen the nuts a bit and apply some thread lock right where the nut will tighten.



Push the panel inward slightly and tighten these nuts.



Do the same as above for these nuts; thread lock and tighten.



Attach your Molle bags, get organized, and enjoy!

Don't forget about our many other Molle Panels and mounts to complete your storage and organization solution system!