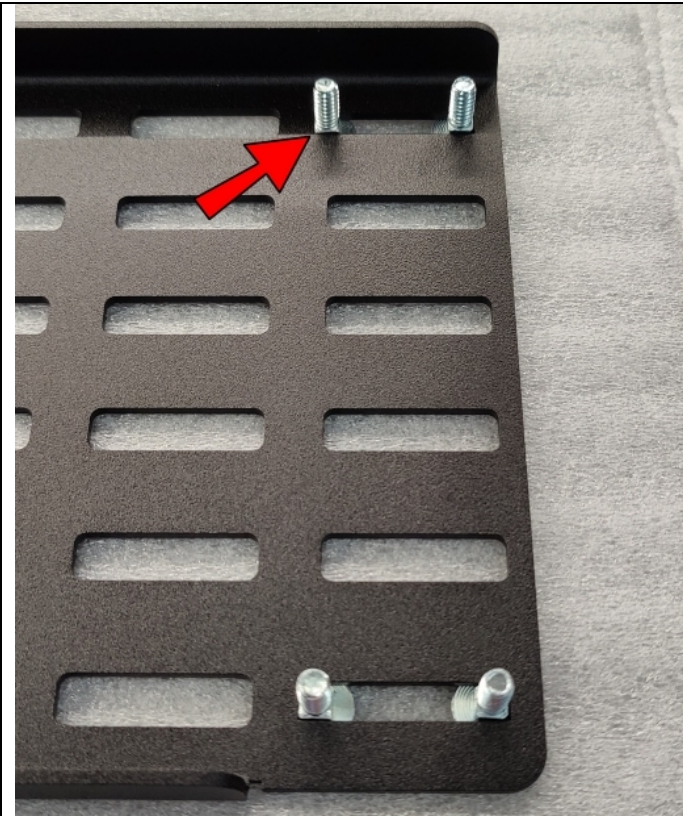


Installation instructions for MR6 Rear Cargo Area Overhead Molle Panel for 5th Gen. 4 Runner

It is highly recommended that you use a thread lock compound such as Loctite brand on all threads to keep them from vibrating loose. Please read these instructions entirely before starting.

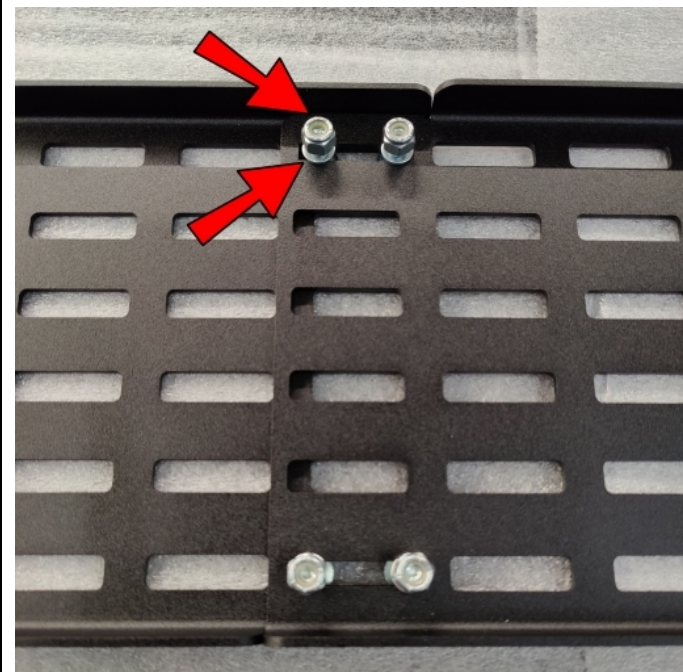
This list shows the components of the MR6 kit. Parts will be referred to by the names & numbers shown here. If you are missing anything please email RefinedCycle@gmail.com.



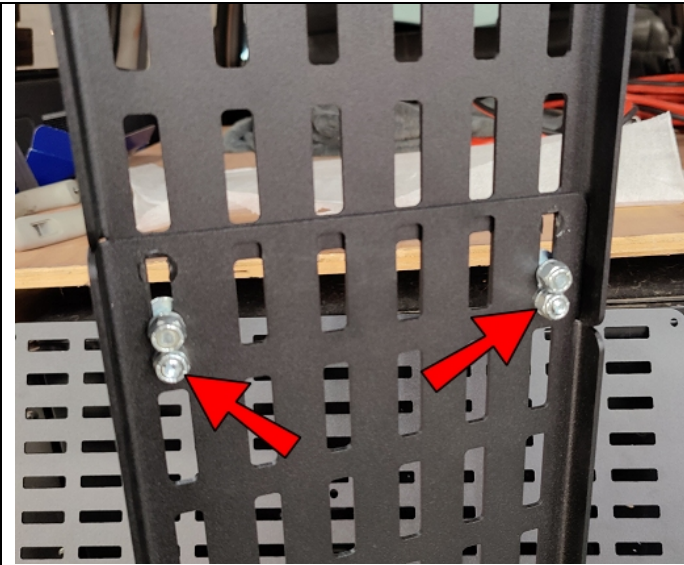
MR6 Components....

- 1) Panel (qty. 2)
- 2) Hanger (qty. 2)
- 3) 1/4-20x1/2 Carriage Bolt (qty. 4)
- 4) 1/4-20x1/2 Locknut (qty. 4)
- 5) M6-1.0x18 Bolt (qty. 8)
- 6) M6 Nut (qty. 8)
- 7) M6 Washer (qty. 20)

Lay one panel down with the bends up and insert four 1/4-20x1/2 Carriage Bolts into the ends of the slots as shown from underneath.

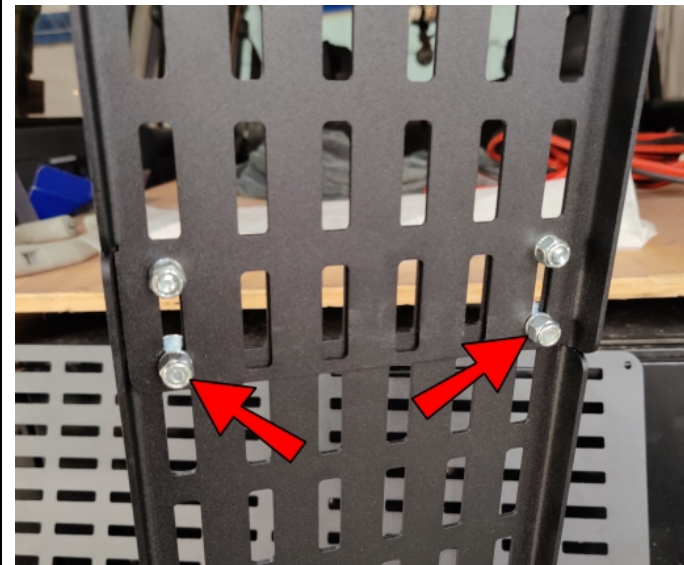


Place the other panel on top of the bolts and put a Washer and a Locknut onto each Bolt. Do NOT tighten yet.



This next step is VERY important! If the ends aren't butted tightly against each other before tightening, it will cause the panels to sag when installed.

STAND the panels up on end. Push the two panels together as tightly as possible and THEN tighten the BOTTOM Locknuts while keeping the ends against each other.



Flip the panels over on the other end. Make sure the bolts fall to the bottom or push them down so they are at complete opposite ends of the slot and then tighten the bottom Locknuts.

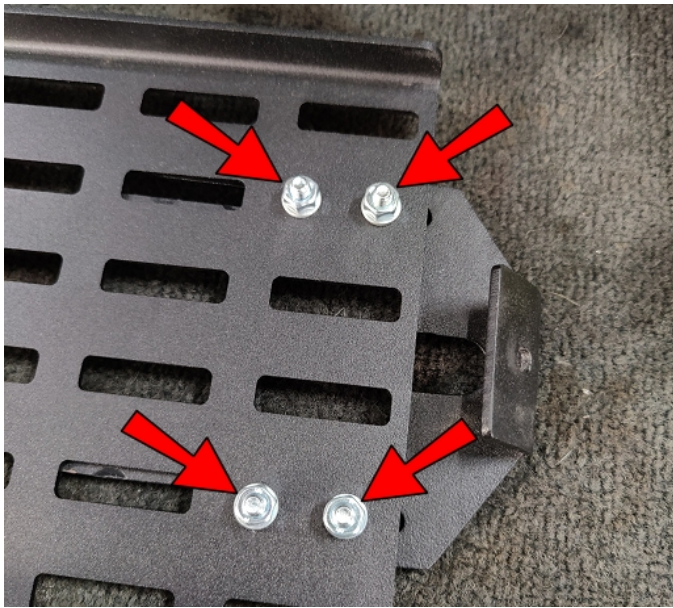


Place a Washer onto all of the M6-1.0x18 Bolts.

Lay the panel with the bends up again and place a Hanger on each end, with the bend UP, underneath the panel as shown.



Insert the M6 Bolts into the slots on the underneath side of the hanger then into the holes on the panels on both ends. Finger tighten only, assuring that the hangers slide back and forth easily.



Now is a good time to arrange and attach your Molle bags. Just leave them loose at the ends so that you can access the four bolts at each end to tighten the hangers once installed onto the ceiling.





Open the cover and remove the hooks from the ceiling of the cargo area. You will use the bolts removed, in the next step.



It is helpful to have a second person hold the entire assembly up while you start the hanger hook bolts. It is also easier to start them by first sliding the panels as far to one side as you can to make room to line up the holes and the bolt. Then slide the panels to the other side to line up that side. Once they are started, tighten them both.



Have another person push the middle up slightly, toward the ceiling while you do the next step.

Holding a wrench on the nuts on the top, tighten all eight bolts.

Finish buttoning up the Molle bags, get organized, and enjoy!