

Installation instructions for MR7 Rear Cargo Area Overhead Molle Panel for Lexus GX460, GX470

It is highly recommended that you use a thread lock compound such as Loctite brand on all threads to keep them from vibrating loose. Please read these instructions entirely before starting.

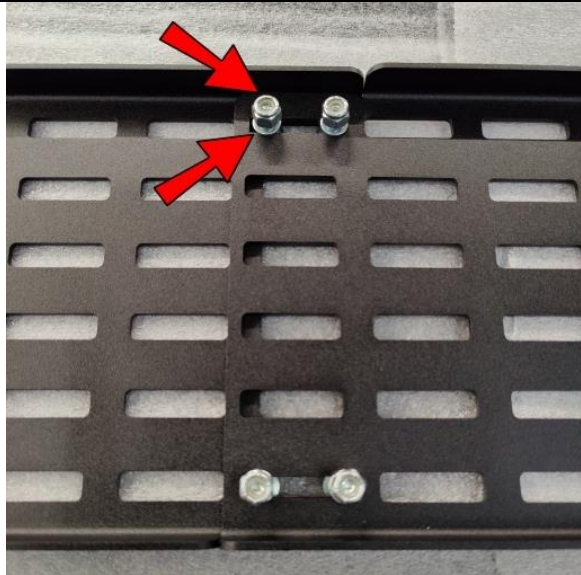
This list shows the components of the MR7 kit. Parts will be referred to by the names & numbers shown here. If you are missing anything please email RefinedCycle@gmail.com.

MR7 Components....

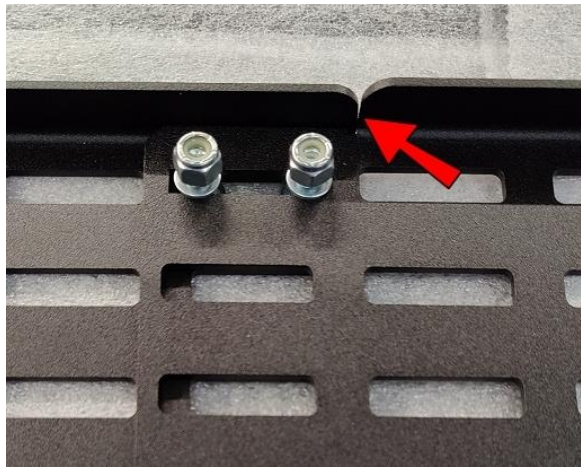
- 1) Panel (qty. 2)
- 2) Hanger (qty. 2)
- 3) 1/4-20x1/2 Carriage Bolt (qty. 4)
- 4) 1/4-20x1/2 Locknut (qty. 4)
- 5) M6-1.0x18 Bolt (qty. 8)
- 6) M6 Nut (qty. 8)
- 7) M6 Washer (qty. 20)



Lay one panel on the top side and insert four 1/4-20x1/2 Carriage Bolts into the ends of the slots as shown from underneath.



Place the other panel on top of the bolts and put a Washer and a Locknut onto each Bolt. Do not tighten yet.



Push the two panels together as tightly as possible and THEN tighten the Locknuts while keeping the ends against each other. This will help keep the panels from flexing in the middle when installed. The offset ends also help this.



Place a Hanger on each end, with the bend UP, underneath the panel as shown.



Place a Washer onto all of the M6-1.0x18 Bolts.



Insert the Bolts into the slots on the underneath side of the hanger then into the holes on the panels on both ends. Finger tighten only, assuring that the hanger slides back and forth easily.



Now is the time to arrange and attach your Molle bags. Just leave them loose at the ends so that you can access the four bolts at each end to tighten the hangers once installed onto the ceiling.



Remove the handles from the ceiling of the cargo area. You will use the bolts removed, in the next step.



It is helpful to have a second person hold the entire assembly up while you start all four bolts, (removed from the handles) but do not tighten yet.



Push the middle up toward the ceiling or have another person do so while you do the next step.



Holding a wrench on the nuts on the top, tighten all eight bolts.

Finish buttoning up the Molle bags, get organized, and enjoy!