

Installation instructions for MR9 Rear Door Molle Panel for Toyota FJ Cruiser

Please read these instructions entirely before starting.

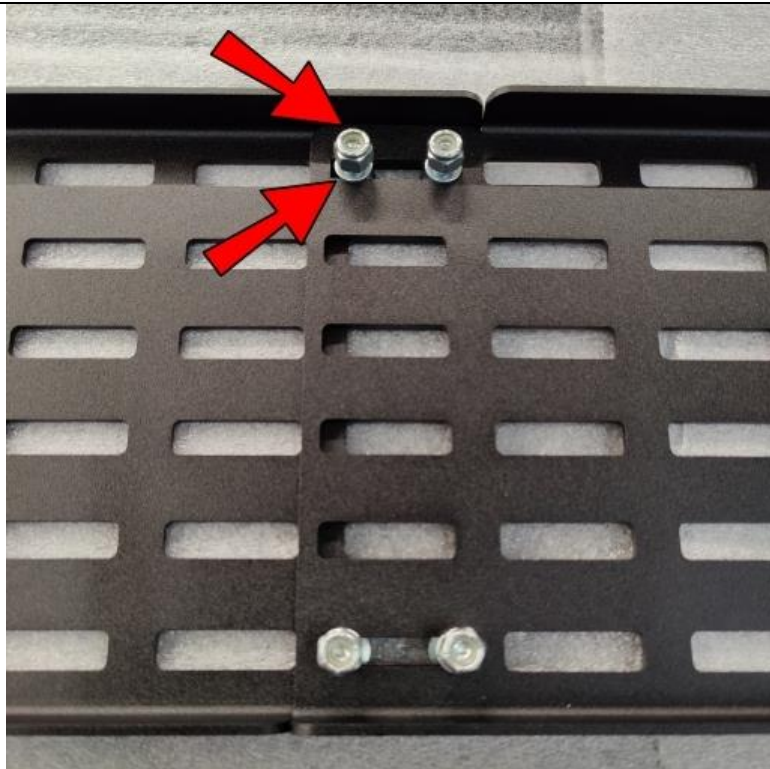
This list shows the components of the MR9 kit. Parts will be referred to by the names & numbers shown here. If you are missing anything please email RefinedCycle@gmail.com.

MR9 Components....

- 1) MR9 Panel (qty. 2)
- 2) 1/4-20x1/2 Carriage Bolts (qty. 4)
- 3) M6-1.0x45 BHCS (qty. 5)
- 4) M6 Nuts (qty. 5)
- 5) M6 Washers (qty. 9)
- 6) 1/4-20 Locknuts (qty. 4)
- 7) .5" Spacer (qty. 5)
- 8) .75" Spacer (qty. 5)



Lay one panel on the top side and insert four 1/4-20x1/2 Carriage Bolts into the ends of the slots as shown from underneath.



Place the other panel on top of the bolts and put a Washer and a 1/4-20 Locknut onto each Bolt and tighten all four Bolts.



Remove the covers over the 2 bolts that hold the door panel on. Remove the bolts. Pop the panel loose from the door. Open the rear window. Remove the panel from the door.



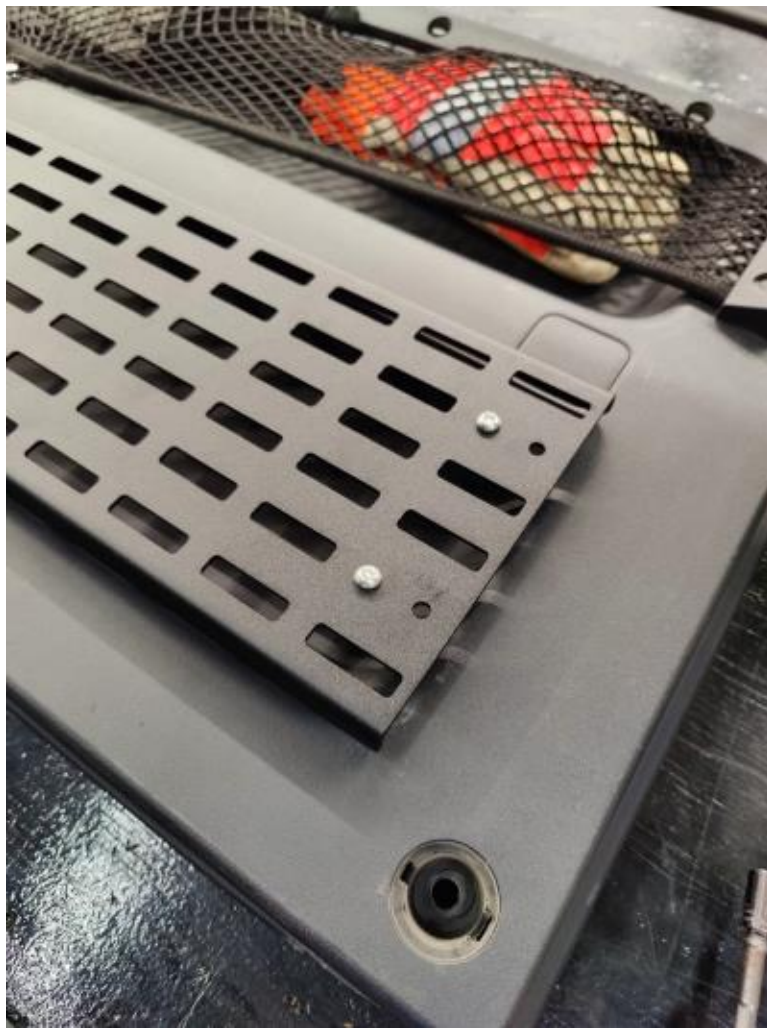
Place the door panel on a flat surface. Place the Molle panel evenly over the indentation on the door panel. It is best to have someone else hold it securely in place while you drill $7/32$ " holes at the INSIDE holes of the Molle panel as shown. Two at each end. You will not use the outside holes.



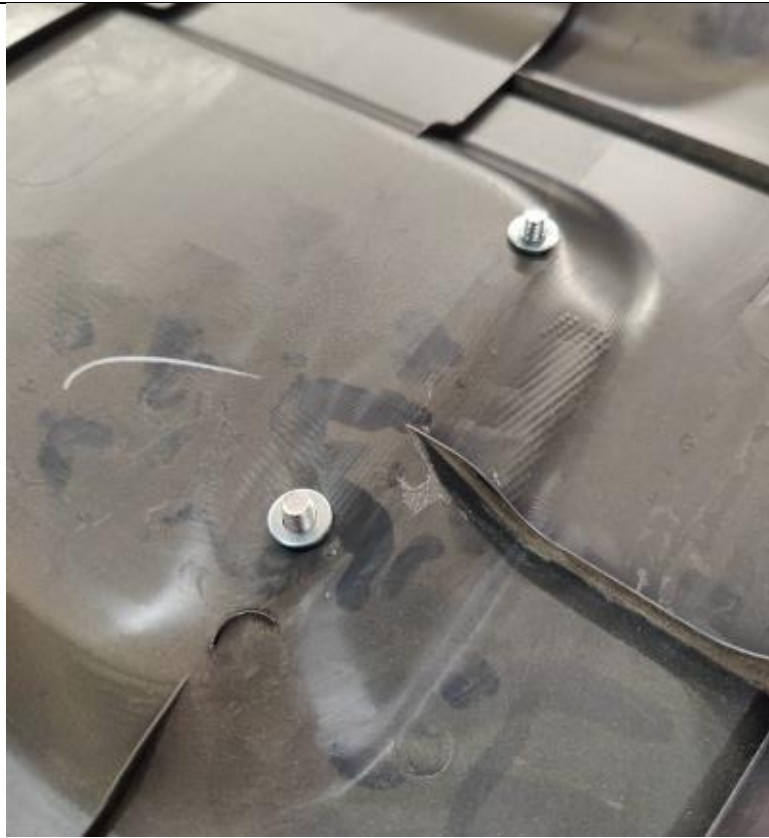
Also, drill a $7/32$ " hole at the TOP ONLY of the center of the Molle panel, right between the carriage bolts.



Remove the Molle panel and stack ONE of the .5" Spacers and ONE of the .75" Spacers onto each other, on each of the 5 holes you drilled.



Replace the Molle panel and attach it to the door panel with the five M6-1.0x45 BHCS. They will thread into the slightly smaller holes you drilled.



Carefully flip the door panel over and place M6 Washers on the Bolts.



Put some threadlocker on each of the bolts then secure with M6 Nuts and tighten.



Re-attach the door panel by snapping it back into place and replacing the bolts and covers at the top.



Pro tip: You can buy a set of these brake picks for a couple bucks at Harbor Freight. They are VERY handy in installing Molle bags to run the straps behind the Molle panel. Once you get the end of the strap started into the slot, grab it with needle nose pliers to pull it through.



Now you can install your Molle bags and get organized! Enjoy!