

Installation instructions for JM1 Jerry Can Mount for Toyota FJ Cruiser

It is highly recommended that you use a thread lock compound such as Loctite brand on all threads to keep them from vibrating loose.

Please read these instructions entirely before starting.

This picture shows the components of the JM1. Parts will be referred to by the names & numbers shown here. If you are missing anything please email RefinedCycle@gmail.com.



JM1 Components	Optional CB Antenna Mount Components
1 - JM1 Right Side Bracket	11 - CB Antenna Mount
2 - JM1 Main Bracket	12 - M6 Nut (qty. 2)
3 - JM1 Left Side Bracket	13 - M6-1.0x20 Hex Head Cap Screw (qty. 2)
4 - M6-1.0x30 Hex Head Cap Screw	14 - M6 Zinc Washer (qty. 4)
5 - M6 Nut (qty. 7)	
6 - M6-1.0x18 Hex Head Cap Screw (qty. 8)	
7 - M10-1.25x40 Socket Head Cap Screw (qty. 6)	
8 - 3/8" Zinc Washer (qty. 14)	
9 - SPC036 Alignment Sleeve (qty. 2)	
10 - M6 Zinc Washer (qty. 16)	



Remove your spare tire, cover and camera if applicable and disconnect the camera wire from the spare mount if there is one connected to it.



Remove the two bolts and the two nuts holding the spare tire carrier to your door. When you remove the carrier, there will be 4 rubber washers on the bolts or stuck to the paint surface. Carefully peel them off, you will re-use them.



If you are lucky, the studs will come out with the nuts.

If you aren't so lucky the nut will come off and the stud will remain. No worries, there are options. First, put some WD40, PB Blaster or other penetrating spray on the stud and take a lunch break while it soaks in.



Welcome back. Here are a few ways to remove the stud....

If you have access to the star shaped tool for the end of the stud, use that. Your dealership should have one also.

You can lightly hammer on a 9/32 socket. (This works surprisingly well.)

You can try vise grips.

You can grind the end square to get a better grip with vise grips.

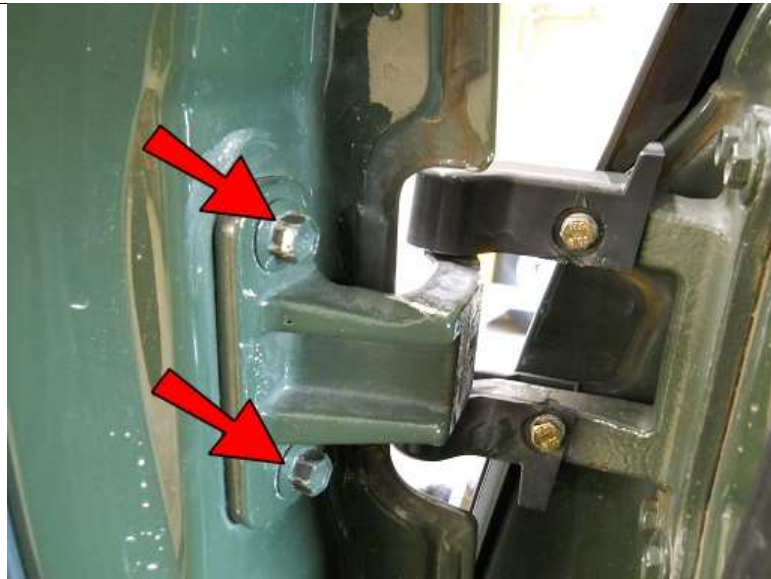
You can thread the nut back on a few turns, then weld the nut to the stud in the middle so you don't mess up the hex edges. Then just use a socket to turn the stud out. Don't worry, you won't re-use the studs.



Remove this middle plastic piece....it just snaps off. It's easier to do with the door open.



Support the door. Two people are always great and it will make this installation easier, but it can be done by yourself with a little ingenuity. I used my spare to brace the weight of the door. I don't officially recommend this, I'm just saying it worked really well for me.



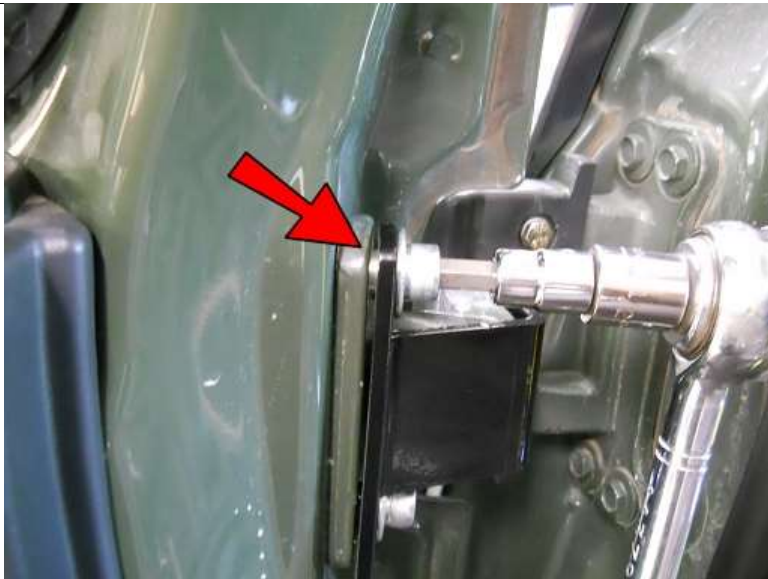
Remove the hinge bolts. (Again, make sure the door is firmly supported, it is heavy!)



Place a 3/8" Zinc Washer and an SPC036 Alignment Sleeve onto 2 of the M10-1.25x40 Socket Head Cap Screws as shown.



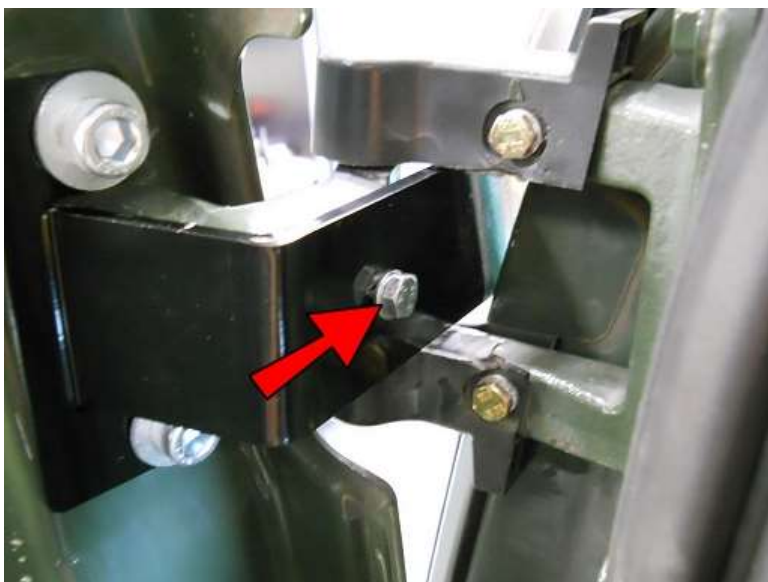
Insert the JM1 Left Side Bracket through the hinge as shown. If you tilt it at the correct angle it will go easily, don't force it, just try another angle if it isn't going



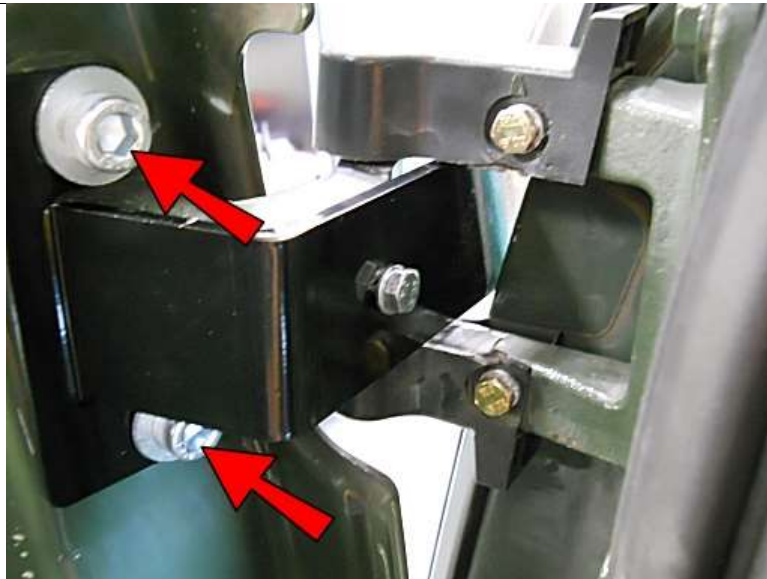
Line up the holes of the Left Side Bracket to the hinge and use the M10 Screws with Washers and Sleeves to connect the Bracket. Make sure the Alignment Sleeves go into the alignment holes on the Left Side Bracket AND the hinge. Do NOT tighten yet.



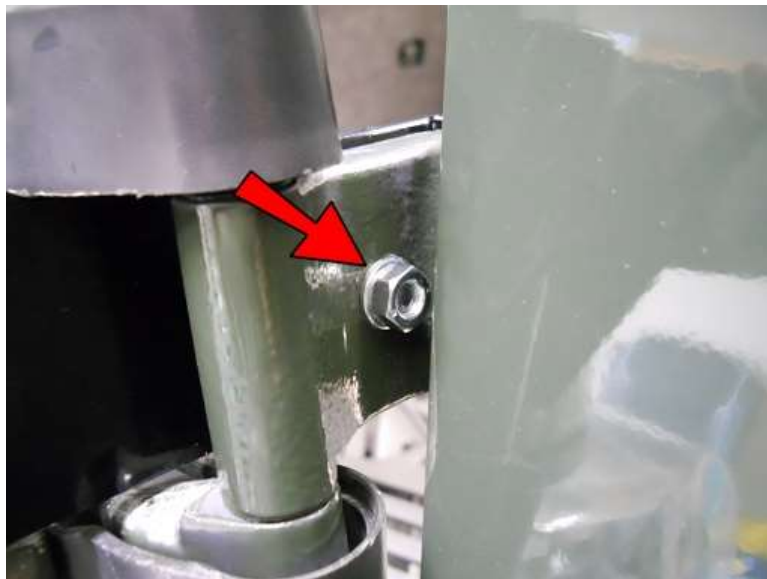
Place an M6 Washer onto the M6-1.0x30 Hex Head Cap Screw.



Insert it into this hole and make sure it goes all the way into the hole in the hinge. You may need to jiggle the Bracket to get the holes to line up.



Now tighten the M10 Screws.



Apply some thread lock to the M6-1.0x30 Screw previously inserted and secure with an M6 Washer and Nut.



Place a 3/8" Zinc Washer on the remaining four M10-1.25x40 Socket Head Cap Screws.



Insert them into the spare carrier.



Place the JM1 Main Bracket onto the two Screws on the left side of the carrier.



Place a 3/8" Zinc Washer and one of the rubber washers removed earlier onto the back side of those two M10 Screws. Later models had a thin stick on plastic washer instead of the nice thick rubber ones. If your washers are not reusable you can get the stick on ones from Toyota, Part #51998-35020 or you can wrap some electrical tape around the Zinc Washer to protect the paint.



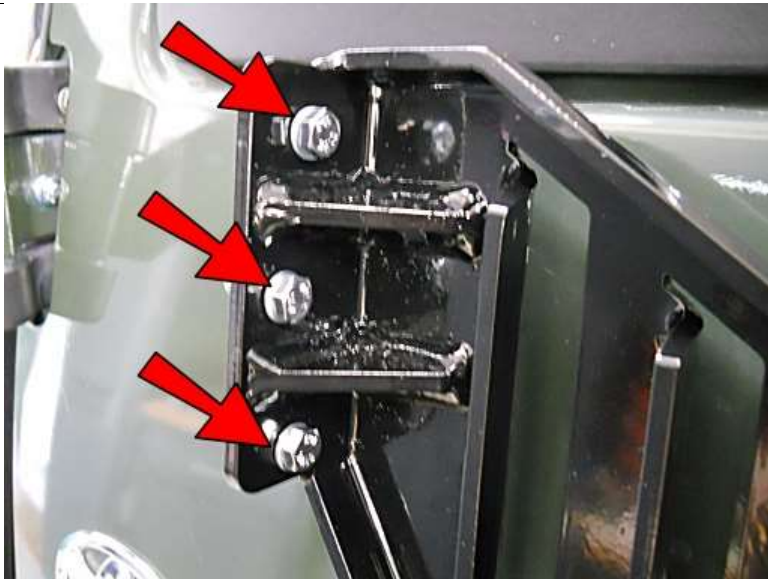
On the other two Screws on the right side of the spare tire carrier, place THREE 3/8" Zinc Washers and one of the rubber washers removed earlier onto each one.



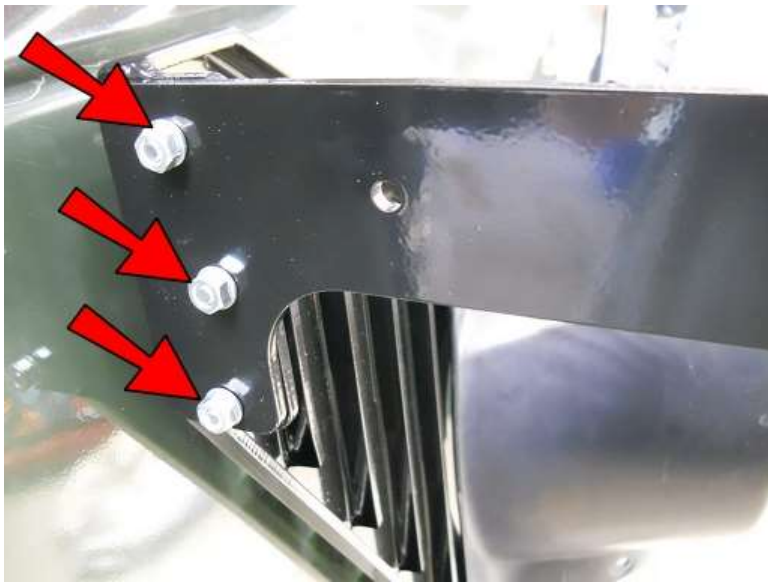
Being careful not to let the carrier or the Main Bracket touch the paint, thread all 4 Screws into the carrier mounting holes on the door. Thread them most of the way, but leave them loose enough that you can move the Main Bracket up and down.



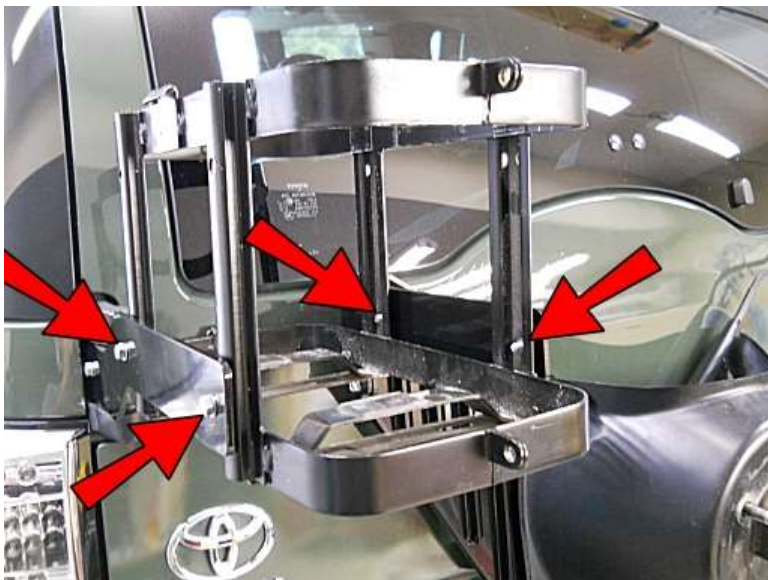
Place M6 Washers onto seven M6-1.0x18 Hex Head Cap Screws.



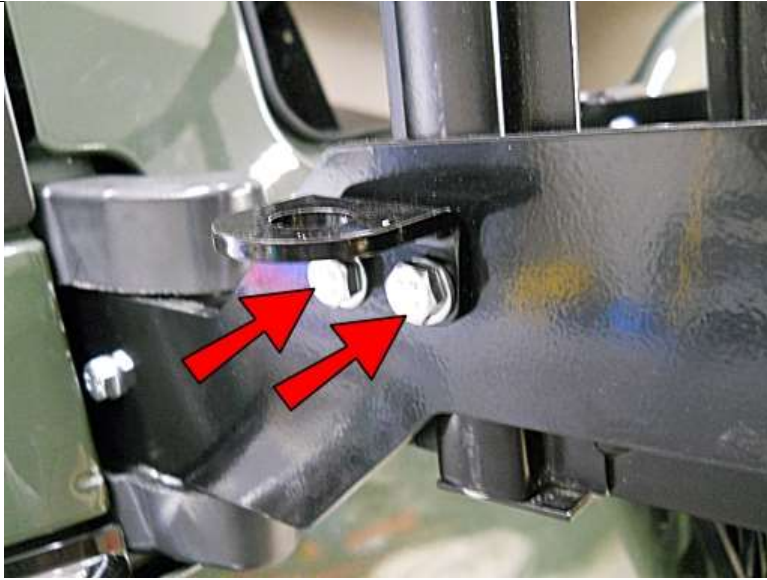
Insert 3 of them here.



Place the JM1 Right Side Bracket onto the Screws and thread three M6 Washers and Nuts onto them and only finger tighten at this time.

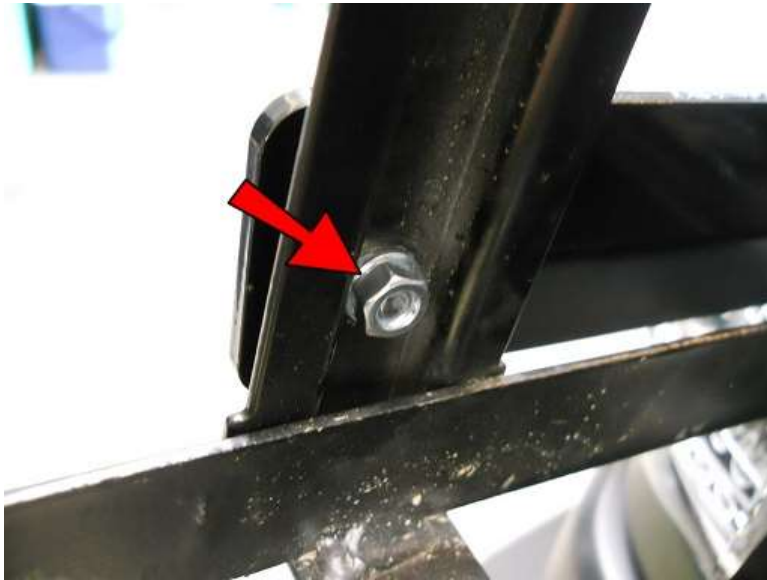


Put the holder in place and insert the 4 remaining M6 Screws with Washers into the corner holes.

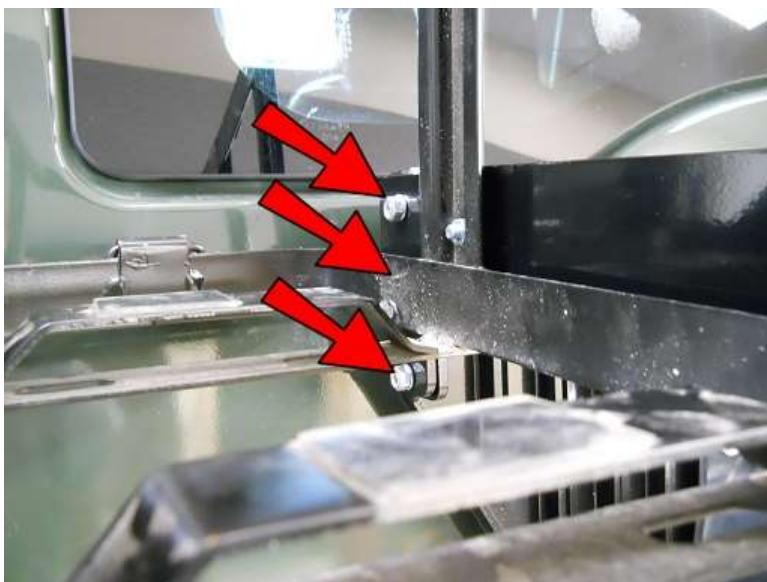


If installing the Optional CB Antenna Mount, use the supplied M6-1.0x20 Hex Head Cap Screws in this corner INSTEAD of the M6-1.0x18.

NOTE: When you install the antenna connector and wiring, slowly open the door to test that everything clears the body when the door is fully opened and make adjustments if necessary.



Now secure all corners with M6 Washers and Nuts. Don't forget to use thread lock!



Now go back to these 3 Screws on the Right Side Bracket and one at a time, remove the nuts, apply thread lock and tighten.



Finally, tighten these Screws completely. Note: Since they are on a rubber washer, they will not feel completely tight, so just get them very snug.

It is recommended that at this point you double check that ALL connections are tight. Replace your spare and camera and that's it!

Depending on what kind of Jerry Can you have, you may want to pad the inside of the holder to keep it from rattling.

Enjoy! And remember....Not all who wander are lost!