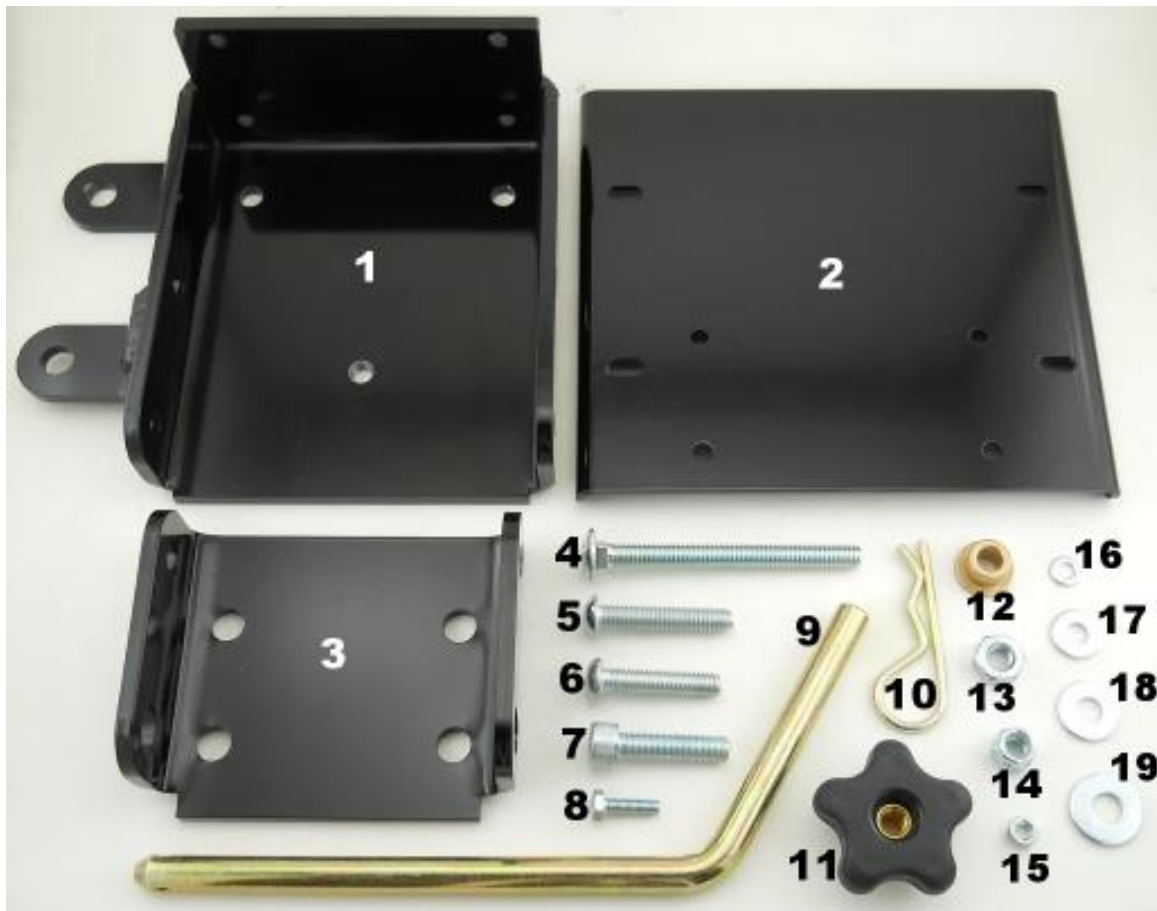


## Installation instructions for JM4 Jerry Can / Hi-Lift Mount for Toyota Land Cruiser 80 Series

It is highly recommended that you use a thread lock compound such as Loctite brand on all threads to keep them from vibrating loose.

Please read these instructions entirely before starting.

This picture shows the components of the JM4. Parts will be referred to by the names & numbers shown here. If you are missing anything please email [RefinedCycle@gmail.com](mailto:RefinedCycle@gmail.com).



**JM4 Components**

1. JM4 Main Bracket

2. JM4 Top

3. JM4 Hanger Bracket

4. 3/8-16x4 Carriage Bolt

5. 3/8-16x2 Button Head Cap Screw (qty. 2)

6. 3/8-16x1.75 Button Head Cap Screw (qty. 2)

7. M10-1.25x40 Socket Head Cap Screw (qty. 4)

8. M6-1.0x20 Hex Head Cap Screw (qty. 10)

9. 7" Pin

10. Pin Clip

11. 3/8-16 Star Knob

12. Bronze Flange Bearing (qty. 2)

13. M10-1.25 Nut (qty. 4)

14. 3/8-16 Lock Nut (qty. 7)

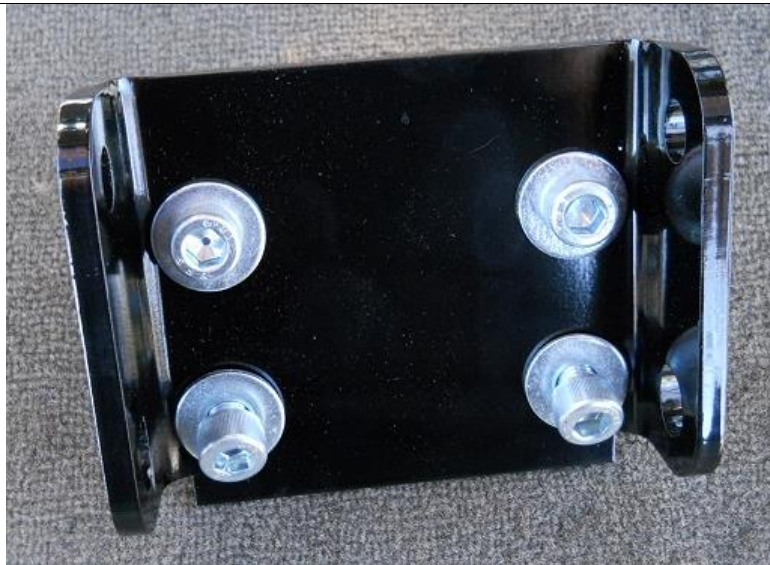
15. M6-1.0 Nut (qty. 10)

16. M6 Washer (qty. 20)

17. 1/4" Washer (qty. 4)

18. 5/16" Washer (qty. 12)

19. 3/8" Washer (qty. 8)



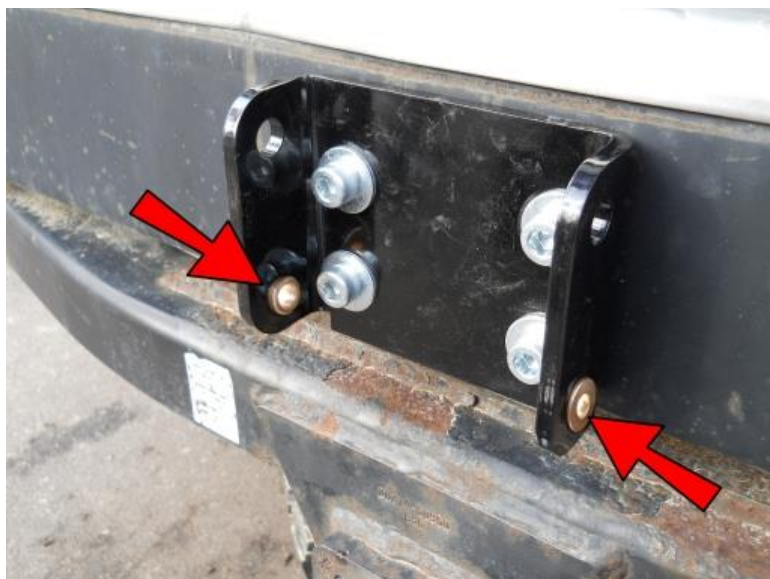
Place a 3/8" Washer onto each of the M10-1.25x40 Socket Head Cap Screws, insert them into the JM4 Hanger Bracket and put some threadlock onto the Screws.



Secure the Hanger to the existing holes in the bumper with four more 3/8" Washers and M10-1.25 Nuts on the inside of the bumper.

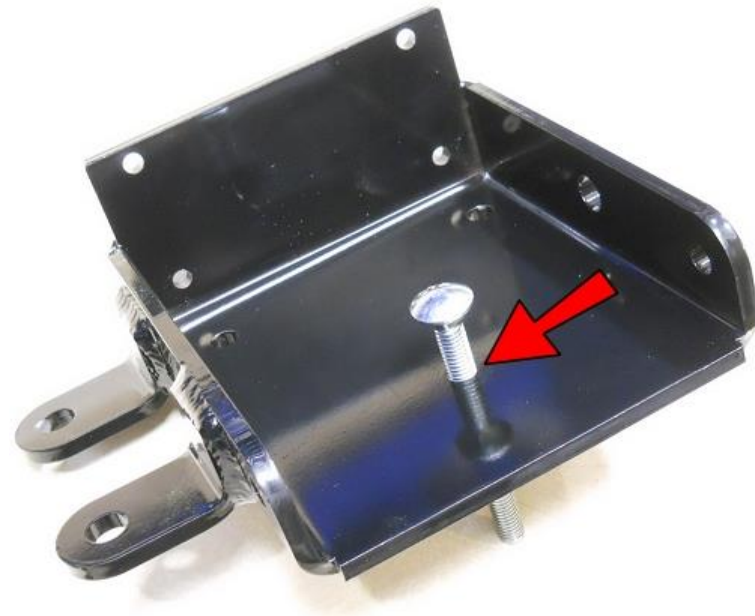
Note: Start the top nuts first since access is limited. Once all four nuts are started make sure the Hanger is straight and tighten everything. This is the most difficult part of the install; I promise it gets better from here!

If you have a spare tire mounted underneath you will want to lower it and move it out of the way while you work. Don't forget to put it back!



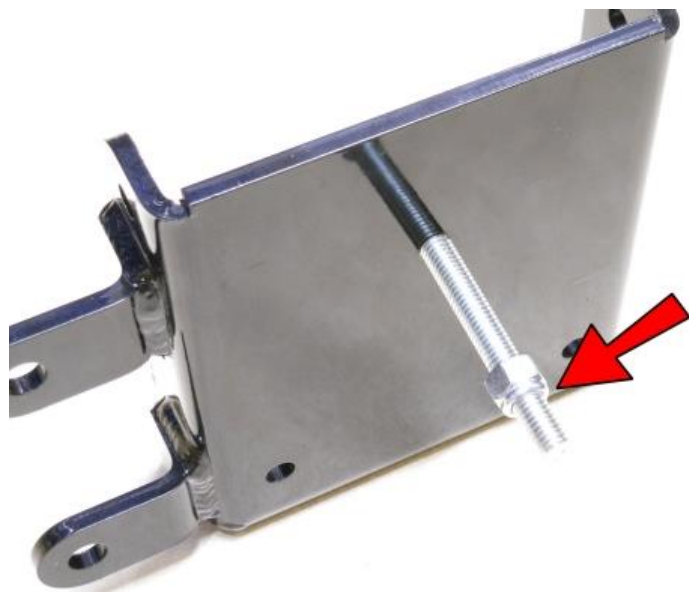
Now stop for a moment to reward yourself for your perseverance and reflect on your strength of will. The rest is a piece of cake!

Insert the Flange Bearings as shown with the flange on the outside.



Thread the Carriage Bolt about 3/4 of the way into the JM4 Main Bracket.

DO NOT USE threadlock here, in fact the use of an anti-seize is a fantastic idea here.



Thread a 3/8-16 Lock Nut onto the Carriage bolt leaving 7/8" of thread exposed.



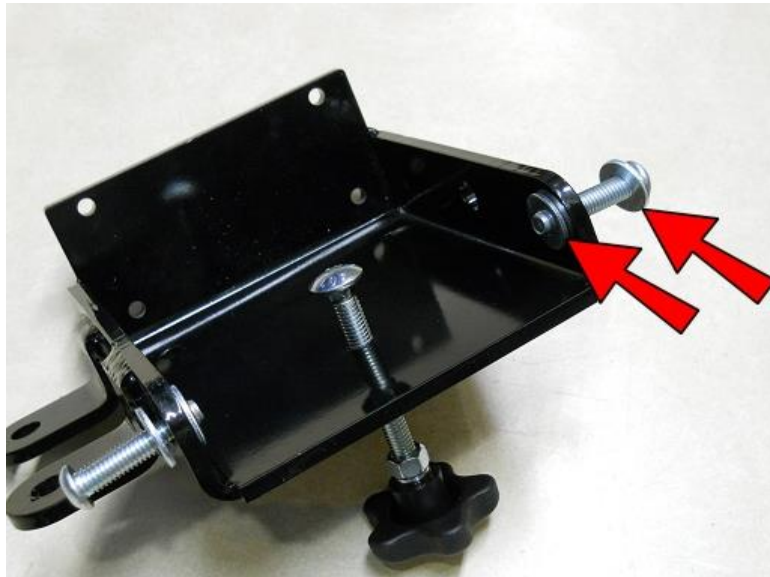
Use threadlock on the exposed thread generously.



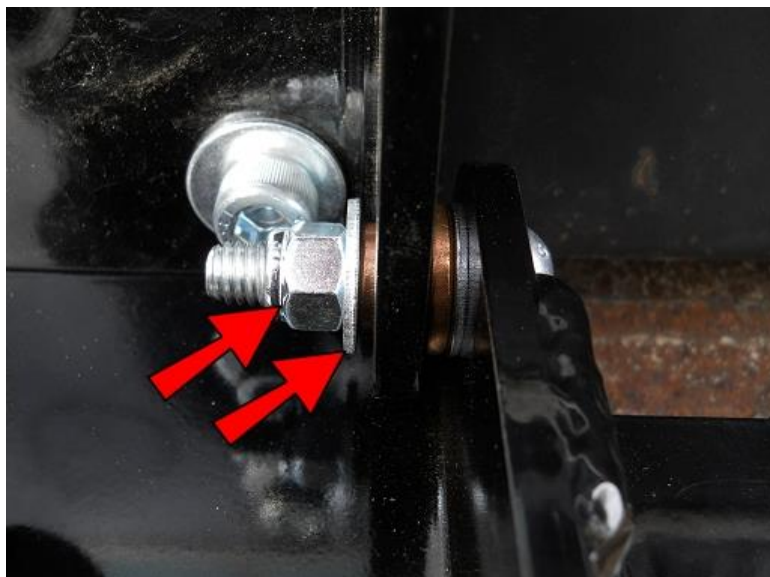


Use a wrench to hold the Nut and thread the Star Knob on tight against the nut.

Note: When everything is assembled and the JM4 is in the upright (closed) position, after the Pin and Pin Clip are in place, you will use this knob to tighten against the Hanger Bracket which will keep the assembly from rattling. A half-turn is about all it takes to loosen and tighten again, once you get it adjusted the first time.



Place a 5/16" Washer onto a 3/8-16x1.75 Socket Head Cap Screw and barely insert it into the bottom holes, then place another 5/16" Washer on the inside as shown.



Line up the screws you just inserted in the Main Bracket with the Flange Bearings in the Hanger Bracket and push the Screws through the Flange Bearings to join the two pieces. Place another 5/16" Washer onto the Screw and secure with a 3/8-16 Lock Nut. Do this on both sides.



Place four M6 Washers onto four of the M6-1.0x20 Hex Head Cap Screws and insert them into the four holes in the JM4 Top.

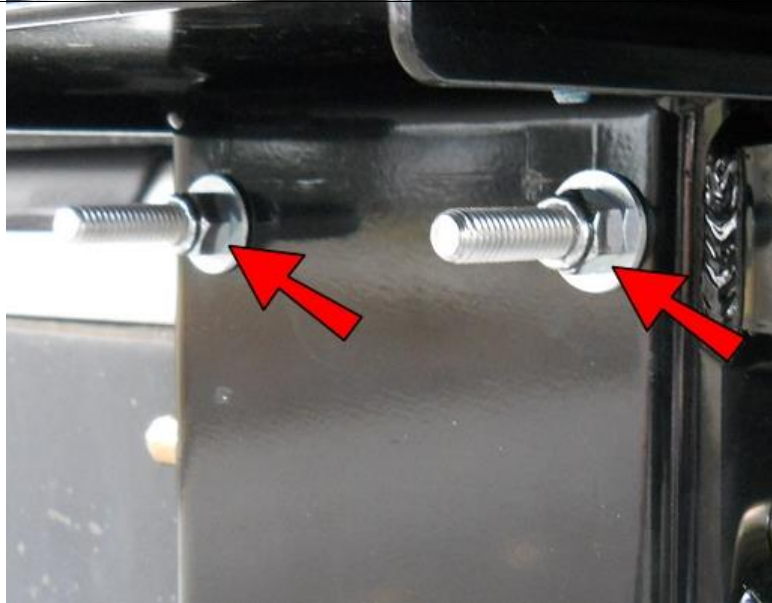


Attach the JM4 Top to the JM4 Main Bracket as shown, with the smallest portion of the overhang to the inside and secure with M6 Washers and M6 Nuts.



Place 3/8-16x2 Button Head Cap Screws into 5/16" Washers and insert them into these two holes.

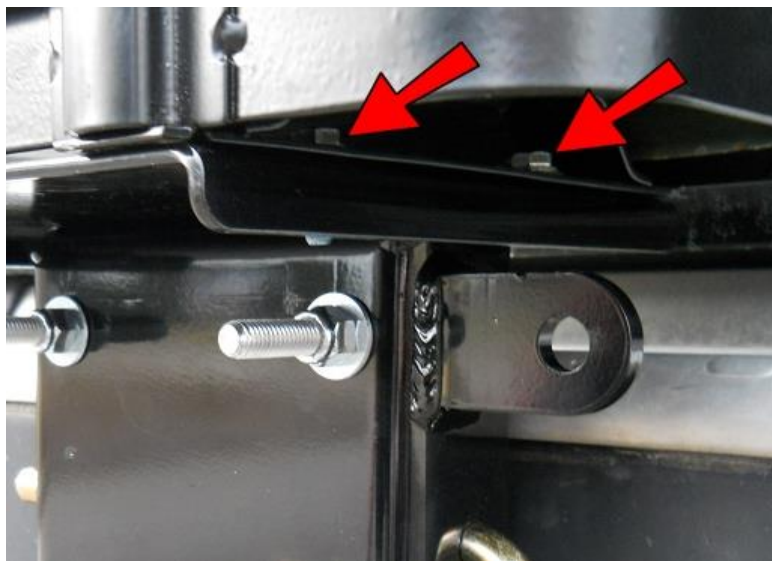




Secure the 3/8 Screws with 5/16" Washers and 3/8" Lock Nuts as shown.



Place four more M6 Washers onto four M6-1.0x20 Hex Head Cap Screws plus four 1/4" Washers.



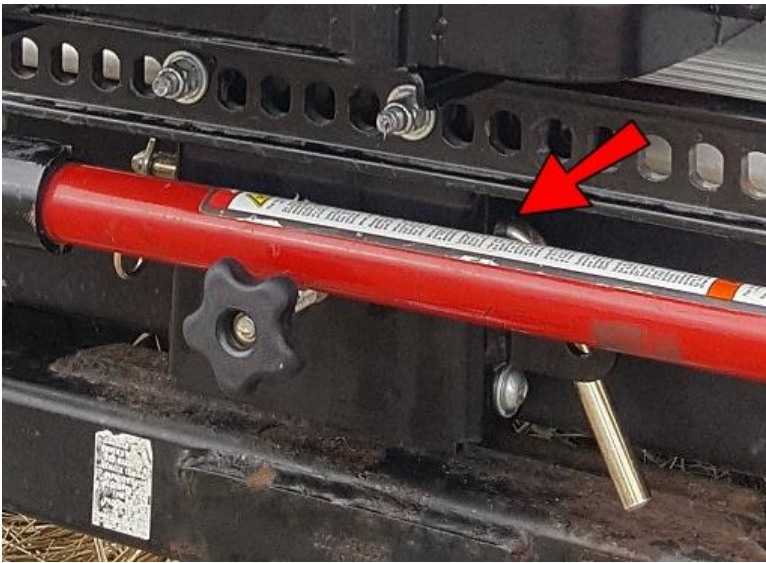
Insert those four screws into the bottom of the Jerry Can Holder, then into the JM4 Top and secure with four M6 Washers and four M6 Nuts.

Use the remaining M6 Screws, washers and Nuts to attach your License plate to the Jerry Can Holder if desired.

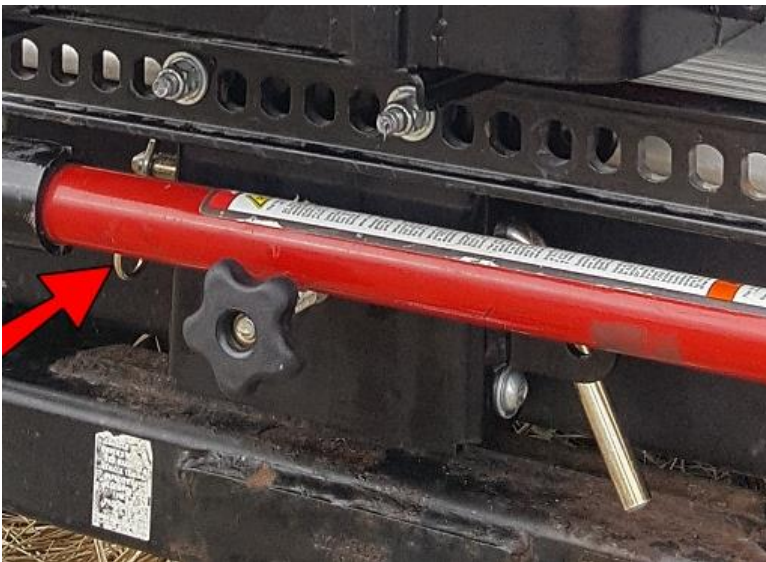
It is recommended that at this point you double check that ALL connections are tight.

Replace your spare tire if needed.

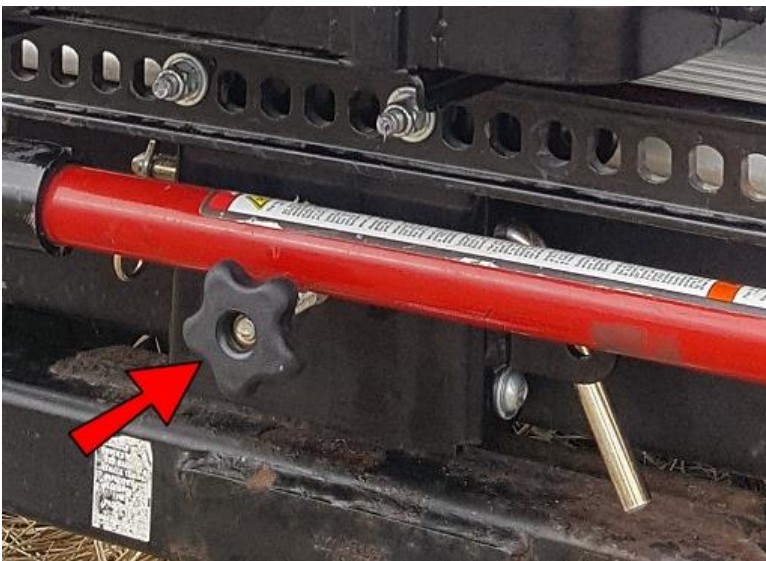
## Using your JM4 Mount....



To secure the JM4 in the upright position, support the top of the Jerry Can with your left hand and insert the 7" Pin into the side hole with your right hand, with the handle behind the lock tab.



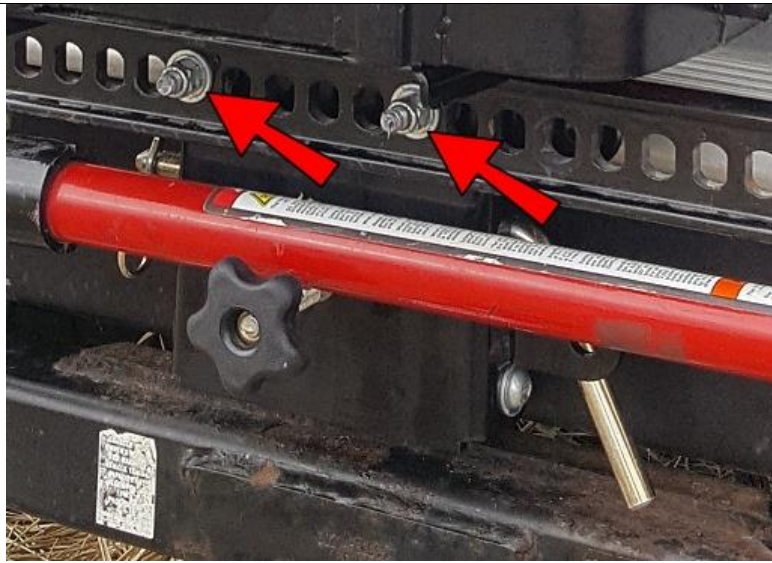
Insert the Pin Clip into the 7" Pin from the bottom.



Turn the Star Knob about a 1/2 turn to tighten it up. The only function of this is to keep the JM4 from rattling so it does not have to be super tight, just snug.

To fold down the JM4 do the previous 3 steps in reverse order. **MAKE SURE** to **SUPPORT** the top of the Jerry Can when you remove the 7" Pin and slowly let it fold down.

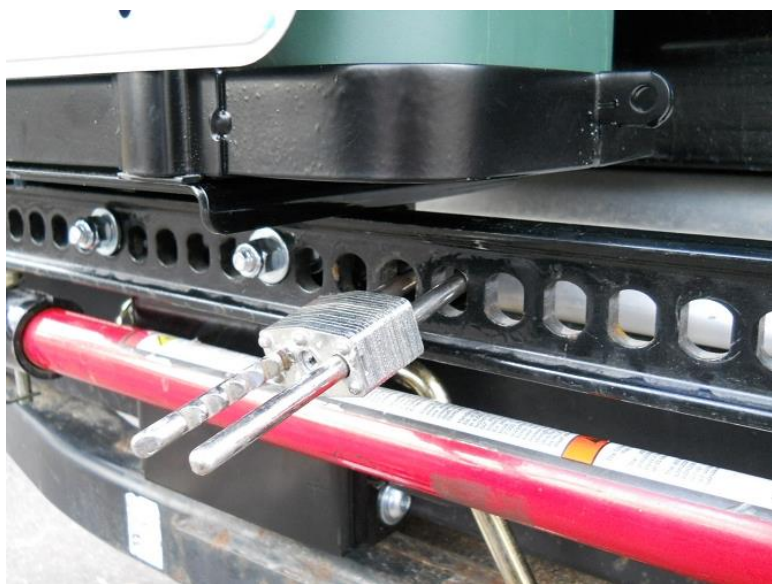




To install the Jack, place it onto the 3/8" Screws and secure with 5/16" Washers and 3/8" Lock Nuts as shown.



To lock the JM4 from being able to be opened run a lock around the pin and through the lower lock tab. A wider lock such as the Master No. 160 works perfect here.



To lock the jack onto the JM4 use an extended or open shackle lock on the upper lock tab.

Depending on what kind of Jerry Can you have, you may want to pad the inside of the holder to keep it from rattling.

Enjoy! And remember....Not all who wander are lost!